

# Affordable, robust solution

## HF-Selectalume II for TL5 lamps

HF-Selectalume II is the most cost-effective, reliable, slim and affordable fluorescent solution, with highly disruptive technology for energy saving, system flexibility and unsurpassed performance. The cost-saving HF-Selectalume II has a robust design which meets all relevant international safety and performance standards. HF-Selectalume II is intended for use with indoor lighting fixtures such as spotlights, downlights and recessed luminaires, which are largely used in office, retail, industry, hotel, restaurant and other applications where control devices are installed with occasional On/Off switching activity

### Benefits

- Automatic restart (after voltage dip or lamp exchange) ensures easy operation and hassle-free re-lamping.
- DC emergency operation in line with IEC/EN 60598-2-22 luminaire norms
- Suitable for luminaires in protection class I and, after testing, class II

### Features

- Complies with CE and Kema-Keur
- Average lifetime in excess of 50,000 hours at  $T_a = 50\text{ }^\circ\text{C}$
- Rapid warm lamp start with filament pre-heating  $< 1.2\text{ sec}$
- Active power factor correction to ensure constant light, irrespective of mains-voltage fluctuations
- The Wago 744 connector offers the flexibility for horizontal-manual or push-in robot wiring, including a simple wire-release facility.

# HF-Selectalume II for TL5 lamps

## Application

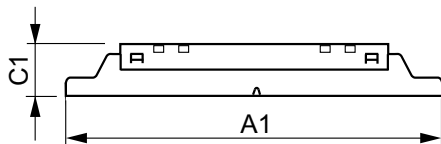
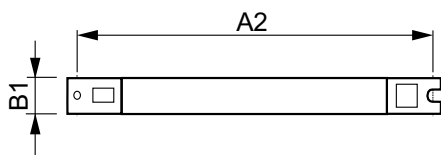
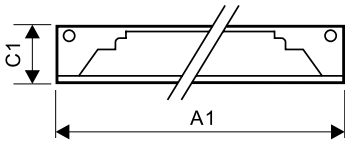
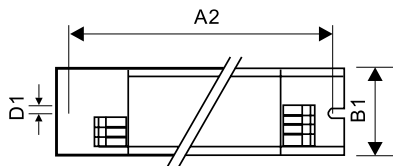
- Ideal for applications where there is a need to reduce the wattage per square meter or to reduce operating costs
- Applications in which control devices are installed with occasional On/Off switching (e.g. where movement or light sensor detectors switch the mains)
- Professional indoor applications with long operating hours, such as office buildings, call centers, classrooms, hotels, department stores, retail stores, supermarkets, convenience stores and industrial premises (e.g. corridors and low-bay trunking systems) and city parking lots

## Versions



HF-S 118, 136 & 158 TL-D II, HF-S  
3/414, 3/424 TL5 II

## Dimensional drawing



### Product

HF-S 149 TL5 II 220-240V 50/60Hz

Product	D1	C1	A1	A2	B1
HF-S 114-35 TL5 HE II 220-240V	4.2 mm	22.0 mm	360.0 mm	350.0 mm	30.0 mm

# HF-Selectalume II for TL5 lamps

## Dimensional drawing

A2

Product	D1	C1	A1	A2	B1
HF-S 154 TL5 II 220-240V 50/60Hz	4.1 mm	28.0 mm	280 mm	265 mm	30.0 mm

### Approval and Application

Energy Efficiency Index A2 BAT

### Operating and Electrical

Input Frequency 50 to 60 Hz

Input Voltage 220 to 240 V

### Emergency Operation

Emergency Ballast Lumen Factor (EBLF) (Nom) 100 %

### General Information

Number Of Lamps 1 piece/unit

Lamp Type TL5

## General Information

Order Code	Full Product Name	Number Of Products On MCB (16A Type B) (Nom)
913713033466	HF-S 149 TL5 II 220-240V 50/60Hz -	
913713033666	HF-S 154 TL5 II 220-240V 50/60Hz -	

Order Code	Full Product Name	Number Of Products On MCB (16A Type B) (Nom)
913713042066	HF-S 114-35 TL5 HE II 220-240V	28

## Mechanical and Housing

Order Code	Full Product Name	Housing
913713033466	HF-S 149 TL5 II 220-240V 50/60Hz	L 280x30x21



## HF-Selectalume II for TL5 lamps

Order Code	Full Product Name	Housing
913713033666	HF-S 154 TL5 II 220-240V 50/60Hz	L 280x30x21
913713042066	HF-S 1 14-35 TL5 HE II 220-240V	L360x30x22

### System characteristics

Order Code	Full Product Name	Lamp		Rated
		Power On TL5	Lamp Power On TL5 HE	Ballast-Lamp Power
913713033466	HF-S 149 TL5 II 220-240V 50/60Hz	51 W	-	49 W
913713033666	HF-S 154 TL5 II 220-240V 50/60Hz	54 W	-	54 W

Order Code	Full Product Name	Lamp		Rated
		Power On TL5	Lamp Power On TL5 HE	Ballast-Lamp Power
913713042066	HF-S 1 14-35 TL5 HE II 220-240V	-	14.7/37.0 W	14-35 W

