



SmartBright LED Floodlight

BVP176 LED190/NW 200W WB GREY CE

19000 lm - 200 W - 4000 K

The SmartBright LED Floodlight is a versatile floodlight engineered to deliver significant energy savings, an ideal solution for diverse floodlighting applications. The product is also designed to meet relevant performance and safety standards, offering you reliable and long-lasting performance.

Product data

| General Information | |
|---|--|
| Lamp family code | LED190 [LED module 19000 lm] |
| Lamp colour code | 740 neutral white |
| Light source replaceable | No |
| Driver included | Yes |
| Optical cover/lens type | PC-UV [Polycarbonate bowl/cover UV-resistant] |
| Luminaire light beam spread | 30° x 80° |
| Control interface | - |
| Connection | Flying leads/wires |
| Cable | Cord 0.6 m without plug |
| Protection class IEC | Safety class I (I) |
| Flammability mark | F [For mounting on normally flammable surfaces] |
| CE mark | CE mark |
| ENEC mark | - |
| Constant light output | No |
| Number of products on MCB (16 A type B) | 13 |

| Light source engine type | LED |
|-----------------------------|------------------------------------|
| Operating and Electrical | |
| Input Voltage | 220 to 240 V |
| Input frequency | 50 or 60 Hz |
| Inrush current | 11.5 A |
| Inrush time | 0.077 ms |
| Power factor (min.) | 0.9 |
| Controls and Dimming | |
| Dimmable | No |
| Mechanical and Housing | |
| Housing material | Aluminum die-cast |
| Optical cover/lens material | Polycarbonate |
| Mounting device | MBA [Mounting bracket adjustable] |
| Optical cover/lens shape | Flat |
| Optical cover/lens finish | Frosted |

SmartBright LED Floodlight

| | |
|--------------------------|-----------------------|
| Overall length | 390 mm |
| Overall width | 287 mm |
| Overall height | 62 mm |
| Effective projected area | 0.1365 m ² |
| Colour | Grey |

Approval and Application

| | |
|------------------------------|---|
| Ingress protection code | IP65 [Dust penetration-protected, jet-proof] |
| Mech. impact protection code | IK07 [2 J reinforced] |

Initial Performance (IEC Compliant)

| | |
|-------------------------------------|----------|
| Initial luminous flux (system flux) | 19000 lm |
| Luminous flux tolerance | +/-10% |
| Initial LED luminaire efficacy | 95 lm/W |
| Lamp colour temperature | 4000 K |
| Colour Rendering Index | >70 |
| Initial chromaticity | SDCM<7 |
| Initial input power | 200 W |

| | |
|-----------------------------|--------|
| Power consumption tolerance | +/-10% |
|-----------------------------|--------|

Application Conditions

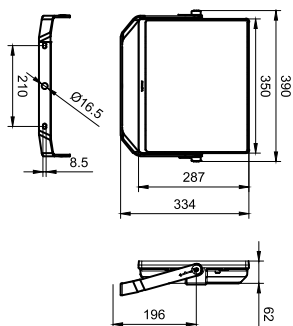
| | |
|---------------------------|---------------|
| Ambient temperature range | -40 to +45 °C |
|---------------------------|---------------|

Product Data

| | |
|-----------------------------------|----------------------------------|
| Full product code | 871016331967499 |
| Order product name | BVP176 LED190/NW 200W WB GREY CE |
| EAN/UPC – product | 8710163319674 |
| Order code | 911401629204 |
| SAP numerator – quantity per pack | 1 |
| Numerator – packs per outer box | 3 |
| SAP material | 911401629204 |
| SAP net weight (piece) | 4.400 kg |



Dimensional drawing



BVP173/174/175/176 Smartbright

