



# SmartBright LED Floodlight

## BVP176 LED190/WW 200W WB GREY CE

19000 lm - 200 W - 3000 K

The SmartBright LED Floodlight is a versatile floodlight engineered to deliver significant energy savings, an ideal solution for diverse floodlighting applications. The product is also designed to meet relevant performance and safety standards, offering you reliable and long-lasting performance.

### Product data

General Information	
Lamp family code	LED190 [ LED module 19000 lm]
Lamp colour code	730 warm white
Light source replaceable	No
Driver included	Yes
Optical cover/lens type	PC-UV [ Polycarbonate bowl/cover UV-resistant]
Luminaire light beam spread	30° x 80°
Control interface	-
Connection	Flying leads/wires
Cable	Cord 0.6 m without plug
Protection class IEC	Safety class I (I)
Flammability mark	F [ For mounting on normally flammable surfaces]
CE mark	CE mark
ENEC mark	-
Constant light output	No
Number of products on MCB (16 A type B)	13

Light source engine type	LED
Operating and Electrical	
Input Voltage	220 to 240 V
Input frequency	50 or 60 Hz
Inrush current	11.5 A
Inrush time	0.077 ms
Power factor (min.)	0.9
Controls and Dimming	
Dimmable	No
Mechanical and Housing	
Housing material	Aluminum die-cast
Optical cover/lens material	Polycarbonate
Mounting device	MBA [ Mounting bracket adjustable]
Optical cover/lens shape	Flat
Optical cover/lens finish	Frosted

# SmartBright LED Floodlight

Overall length	390 mm
Overall width	287 mm
Overall height	62 mm
Effective projected area	0.1365 m <sup>2</sup>
Colour	Grey

## Approval and Application

Ingress protection code	IP65 [ Dust penetration-protected, jet-proof]
Mech. impact protection code	IK07 [ 2 J reinforced]

## Initial Performance (IEC Compliant)

Initial luminous flux (system flux)	19000 lm
Luminous flux tolerance	+/-10%
Initial LED luminaire efficacy	95 lm/W
Lamp colour temperature	3000 K
Colour Rendering Index	>70
Initial chromaticity	SDCM<7
Initial input power	200 W

Power consumption tolerance	+/-10%
-----------------------------	--------

## Application Conditions

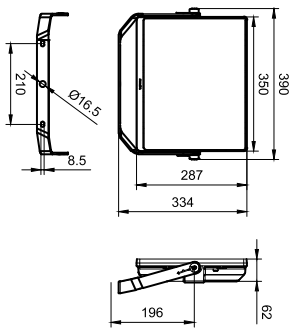
Ambient temperature range	-40 to +45 °C
---------------------------	---------------

## Product Data

Full product code	871016331966799
Order product name	BVP176 LED190/WW 200W WB GREY CE
EAN/UPC – product	8710163319667
Order code	911401629704
SAP numerator – quantity per pack	1
Numerator – packs per outer box	3
SAP material	911401629704
SAP net weight (piece)	4.400 kg



## Dimensional drawing



BVP173/174/175/176 Smartbright

