



RoadFlair Gen2

BRP491 LED102/NW 70W 220-240V DM GM

10200 lm - 70 W - 4000 K

The RoadFlair Gen2 is brand new design road lighting product family, set to meet customers' all-round requirements, including high lumen efficacy for energy saving and sustainability, an aesthetic design with nice shapes and appearance, quality materials and components for product reliability and long lifetime, professional optics for various applications, a dimming and system control interface for improving municipal operations and offering future-proof features. The RoadFlair Gen2 competitive price will help with the acceleration of road lighting LED transformation, to a more sustainable society and smarter city.

Product data

General Information		Controls and Dimming	
Lamp colour code	740 neutral white	Dimmable	Yes
Driver included	Yes		
Optical cover/lens type	PC-MLO [Polycarbonate micro lens optic]	Mechanical and Housing	
Control interface	Analog	Housing material	Aluminium pressure die cast
Connection	SI [Screw connection block]	Optical cover/lens material	Polycarbonate
Cable	-	Overall length	355 mm
Protection class IEC	Safety class I (I)	Overall width	230 mm
CE mark	CE mark	Overall height	136 mm
		Colour	Aluminium and Grey
Operating and Electrical		Approval and Application	
Input Voltage	220 to 240 V	Ingress protection code	IP66 [Dust penetration-protected, jet-proof]
Input frequency	50 or 60 Hz	Mech. impact protection code	IK08 [5 J vandal-protected]
Power factor (min.)	0.95		
		Initial Performance (IEC Compliant)	
		Initial luminous flux (system flux)	10200 lm

RoadFlair Gen2

Luminous flux tolerance	+/-10%
Initial LED luminaire efficacy	140 lm/W
Lamp colour temperature	4000 K
Colour Rendering Index	>70
Initial input power	70 W
Power consumption tolerance	+/-10%

Application Conditions

Ambient temperature range	-40 to +50 °C
---------------------------	---------------

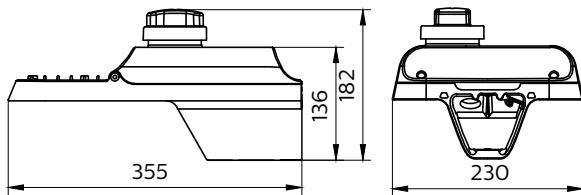
Product Data

Full product code	911401673006
-------------------	--------------

Order product name	BRP491 LED102/NW 70W 220-240V DM GM
Order code	911401673006
SAP numerator – quantity per pack	1
Numerator – packs per outer box	1
SAP material	911401673006
SAP net weight (piece)	3.600 kg



Dimensional drawing



BRP47x/BRP49x

