



RoadFlair Gen2

BRP491 LED107/WW 80W 220-240V DM GM

10700 lm - 80 W - 3000 K

The RoadFlair Gen2 is brand new design road lighting product family, set to meet customers' all-round requirements, including high lumen efficacy for energy saving and sustainability, an aesthetic design with nice shapes and appearance, quality materials and components for product reliability and long lifetime, professional optics for various applications, a dimming and system control interface for improving municipal operations and offering future-proof features. The RoadFlair Gen2 competitive price will help with the acceleration of road lighting LED transformation, to a more sustainable society and smarter city.

Product data

General Information		Controls and Dimming	
Lamp colour code	730 warm white	Dimmable	Yes
Driver included	Yes		
Mechanical and Housing			
Optical cover/lens type	PC-MLO [Polycarbonate micro lens optic]	Housing material	Aluminium pressure die cast
Control interface	Analog	Optical cover/lens material	Polycarbonate
Connection	SI [Screw connection block]	Overall length	355 mm
Cable	-	Overall width	230 mm
Protection class IEC	Safety class I (I)	Overall height	136 mm
CE mark	CE mark	Colour	Aluminium and Grey
Operating and Electrical		Approval and Application	
Input Voltage	220 to 240 V	Ingress protection code	IP66 [Dust penetration-protected, jet-proof]
Input frequency	50 or 60 Hz	Mech. impact protection code	IK08 [5 J vandal-protected]
Power factor (min.)	0.95		
Initial Performance (IEC Compliant)			
Initial luminous flux (system flux)	10700 lm		

RoadFlair Gen2

Luminous flux tolerance	+/-10%
Initial LED luminaire efficacy	130 lm/W
Lamp colour temperature	3000 K
Colour Rendering Index	>70
Initial input power	80 W
Power consumption tolerance	+/-10%

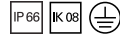
Application Conditions

Ambient temperature range	-40 to +50 °C
---------------------------	---------------

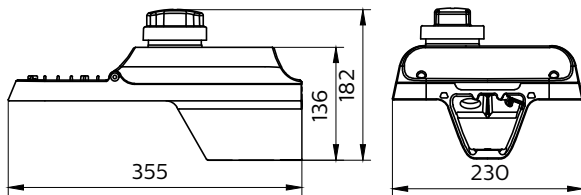
Product Data

Full product code	911401674406
-------------------	--------------

Order product name	BRP491 LED107/WW 80W 220-240V DM GM
Order code	911401674406
SAP numerator – quantity per pack	1
Numerator – packs per outer box	1
SAP material	911401674406
SAP net weight (piece)	3.600 kg



Dimensional drawing



BRP47x/BRP49x

