



RoadFlair Gen2

BRP492 LED201/WW 150W 220-240V DM GM

20100 lm - 150 W - 3000 K

The RoadFlair Gen2 is brand new design road lighting product family, set to meet customers' all-round requirements, including high lumen efficacy for energy saving and sustainability, an aesthetic design with nice shapes and appearance, quality materials and components for product reliability and long lifetime, professional optics for various applications, a dimming and system control interface for improving municipal operations and offering future-proof features. The RoadFlair Gen2 competitive price will help with the acceleration of road lighting LED transformation, to a more sustainable society and smarter city.

Product data

General Information	
Lamp colour code	730 warm white
Driver included	Yes
Optical cover/lens type	PC-MLO [Polycarbonate micro lens optic]
Control interface	Analog
Connection	SI [Screw connection block]
Cable	-
Protection class IEC	Safety class I (I)
CE mark	CE mark

Operating and Electrical	
Input Voltage	220 to 240 V
Input frequency	50 or 60 Hz
Power factor (min.)	0.95

Controls and Dimming	
Dimmable	Yes

Mechanical and Housing	
Housing material	Aluminium pressure die cast
Optical cover/lens material	Polycarbonate
Overall length	404 mm
Overall width	230 mm
Overall height	136 mm
Colour	Aluminium and Grey

Approval and Application	
Ingress protection code	IP66 [Dust penetration-protected, jet-proof]
Mech. impact protection code	IK08 [5 J vandal-protected]

Initial Performance (IEC Compliant)	
Initial luminous flux (system flux)	20100 lm

RoadFlair Gen2

Luminous flux tolerance	+/-10%
Initial LED luminaire efficacy	130 lm/W
Lamp colour temperature	3000 K
Colour Rendering Index	>70
Initial input power	150 W
Power consumption tolerance	+/-10%

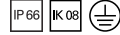
Application Conditions

Ambient temperature range	-40 to +50 °C
---------------------------	---------------

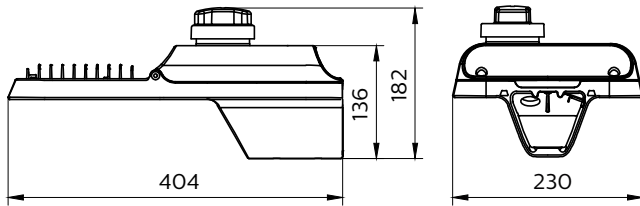
Product Data

Full product code	911401674706
-------------------	--------------

Order product name	BRP492 LED201/WW 150W 220-240V DM GM
Order code	911401674706
SAP numerator – quantity per pack	1
Numerator – packs per outer box	1
SAP material	911401674706
SAP net weight (piece)	4.100 kg



Dimensional drawing



BRP47x/BRP49x

