



TL-X XL



TL-X XL 40W/33-640 SLV/25

Single-pin low-pressure mercury discharge lamps with a tubular 38 mm envelope

Warnings and Safety

- A lamp breaking is extremely unlikely to have any impact on your health. If a lamp breaks, ventilate the room for 30 minutes and remove the parts, preferably with gloves. Put them in a sealed plastic bag and take it to your local waste facilities for recycling. Do not use a vacuum cleaner.

Product data

General Information	
Cap base	FA6 [FA6]
Life to 10% failures (nom.)	21000 h
Life to 50% failures (nom.)	26000 h
	Sphere
Light Technical	
Colour Code	33-640
Lamp Luminous Flux 25°C EL (Nom)	2300 lm
Colour Designation	Cool White (CW)
Lumen maintenance 10,000 hours (nom.)	0 %
Lumen maintenance 2,000 hours (nom.)	88 %
Lumen maintenance 5,000 hours (nom.)	83 %
Chromaticity coordinate X (nom.)	0.38
Chromaticity coordinate Y (nom.)	0.38
Colour Temperature, horizontal (Nom)	4000 K
Lamp Luminous Efficacy EM (Nom)	58 lm/W
Colour Rendering Index,horiz (Nom)	60
Operating and Electrical	
Power (Rated) (Nom)	40.0 W

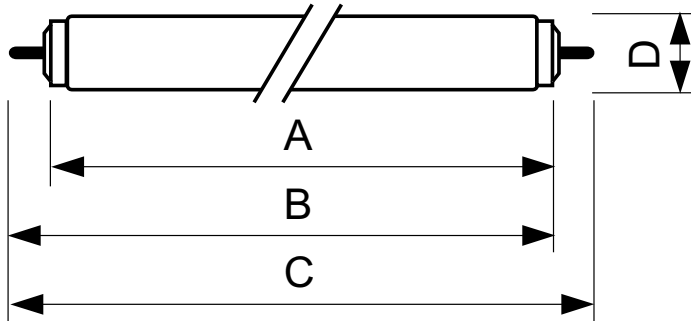
Lamp current (nom.)	0.430 A
Voltage (Nom)	103 V
Controls and Dimming	
Dimmable	Yes
Mechanical and Housing	
Bulb shape	T12 [38 mm (T12)]
Approval and Application	
Energy Efficiency Class	G
Mercury (Hg) content (max.)	12 mg
Mercury (Hg) content (nom.)	12.0 mg
Energy consumption kWh/1,000 hours	40 kWh
	423515
Product Data	
Full product code	871150026137340
Order product name	TL-X XL 40W/33-640 SLV/25
EAN/UPC – product	8711500261373
Order code	928037903332

TL-X XL

Local order code	9280-379-03332
SAP numerator – quantity per pack	1
Numerator – packs per outer box	25
SAP material	928037903332

SAP net weight (piece)	233.000 g
ILCOS code	FD-40/41/2B-LC/N-Fa6

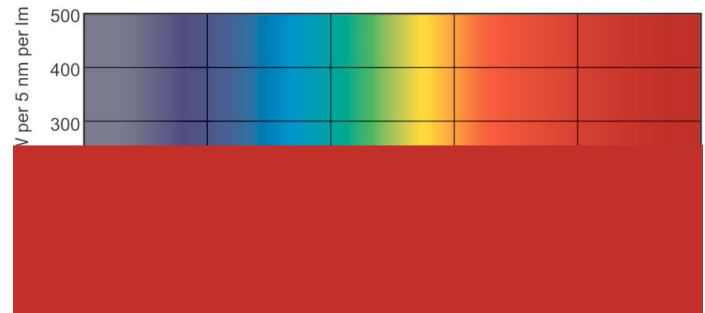
Dimensional drawing



Product	D (max)	A (max)	B (max)	B (min)	C (max)
TL-X XL 40W/33-640 SLV/25	40.5 mm	1183.5 mm	1202 mm	1198.5 mm	1220.5 mm

TL-X XL 40W/33-640

Photometric data



Lightcolour /33-640

Lightcolour /33-640

