



# Essential LEDtube

## LEDtube 600mm 8W 765 T8 AP I G

Essential LEDtube is an affordable LED tube that is suitable for replacing T8 fluorescent lamps. The product provides a natural lighting effect for use in general lighting applications, as well as instant energy savings – an environmentally friendly solution.

### Product data

General information	
Cap base	G13 [ Medium Bi-Pin Fluorescent]
EU RoHS compliant	Yes
Nominal lifetime (nom.)	15000 h
Switching cycle	50,000X
Light technical	
Colour Code	765 [ CCT of 6,500 K]
Technical Beam Angle (Nom)	240 °
Lamp Luminous Flux 25°C EL (Nom)	800 lm
Colour Designation	Cool Daylight
Colour Temperature, horizontal (Nom)	6500 K
Lamp Luminous Efficacy EM (Nom)	100.00 lm/W
Colour consistency	<7
Colour Rendering Index,horiz (Nom)	73
LLMF at end of nominal lifetime (nom.)	70 %
Operating and electrical	
Input frequency	50 to 60 Hz
Power (Rated) (Nom)	8 W
Starting time (nom.)	0.5 s
Warm-up time to 60% light (nom.)	0.5 s
Power factor (nom.)	0.5

Voltage (Nom)	220–240 V
Temperature	
T-ambient (max.)	45 °C
T-ambient (min.)	-20 °C
T storage (max.)	65 °C
T storage (min.)	-40 °C
T-Case maximum (nom.)	60 °C
Controls and dimming	
Dimmable	No
Mechanical and housing	
Product length	600 mm
Bulb shape	Tube, double-ended
Approval and application	
Energy-saving product	Yes
Suitable for accent lighting	No
Approval marks	RoHS compliance KEMA Keur certificate
Energy consumption kWh/1,000 hours	8 kWh

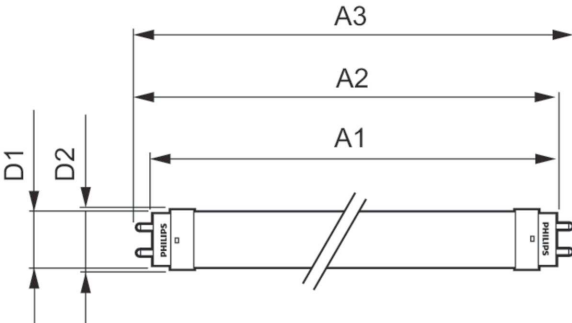
# Essential LEDtube

## Product data

Full product code	871869664605200
Order product name	LEDtube 600mm 8W 765 T8 AP I G
EAN/UPC – product	8718696646052
Order code	929001184838
SAP numerator – quantity per pack	1

Numerator – packs per outer box	20
SAP material	929001184838
Copy Net Weight (Piece)	0.091 kg

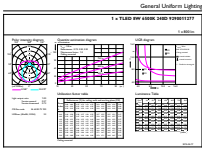
## Dimensional drawing



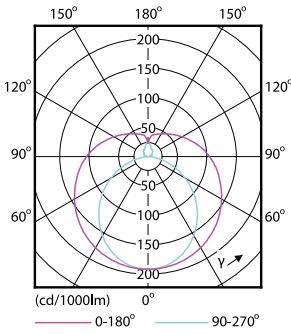
LEDtube 600mm 8W 765 T8 AP I G

Product	D1	D2	A1	A2	A3	C	D
LEDtube 600mm	25.68	28	588.5	595.5	602.5	602.5	27.8
8W 765 T8 AP I G	mm	mm	mm	mm	mm	mm	mm

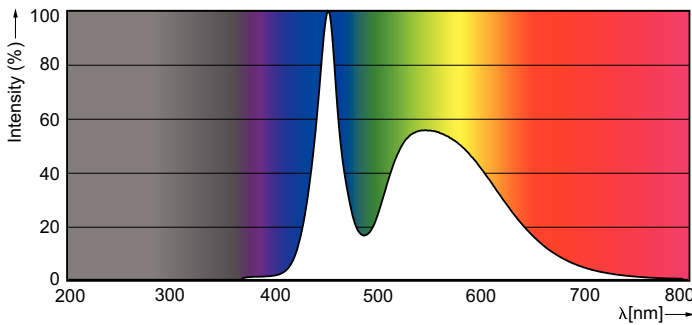
## Photometric data



General Uniform Lighting 1.1. TABLE OF BEAM SPREAD CHARACTERISTICS Page 10



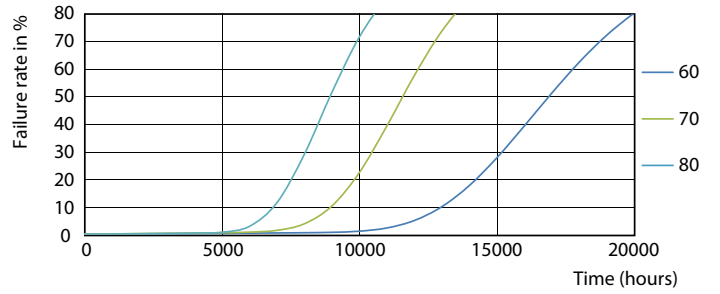
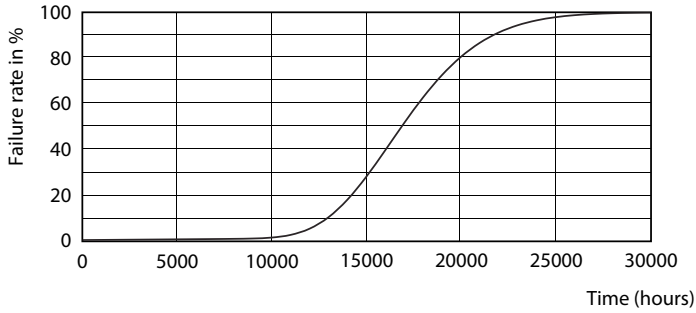
LEDtube 1200mm 16W 765 T8 CN I G



LEDtube 600mm 8W G13 T8 765 800lm AP C G

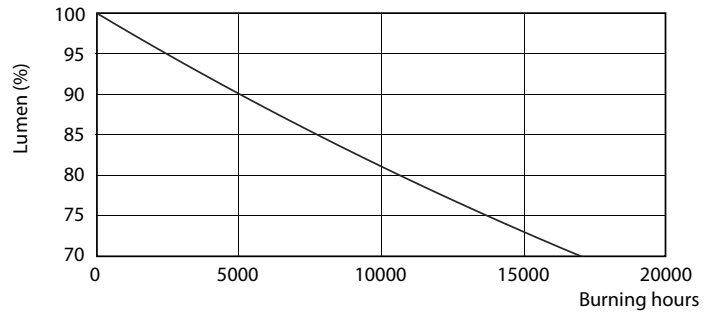
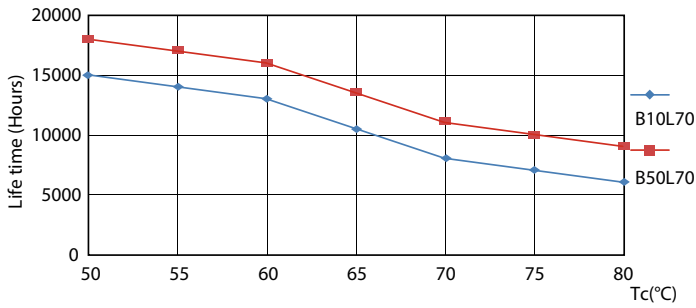
# Essential LEDtube

## Lifetime



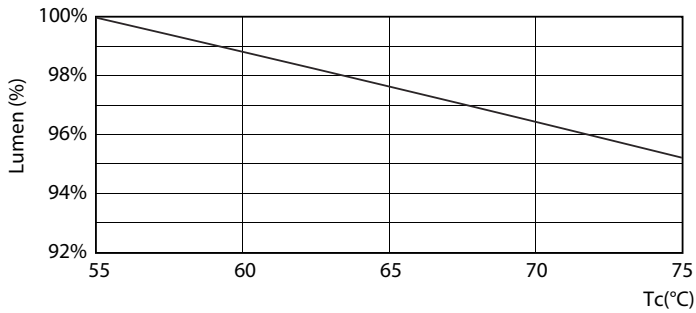
LEDtube 16W G13 740 T8 AP I G

LEDtube 16W G13 740 T8 AP I G



LEDtube 16W G13 740 T8 AP I G

LEDtube 16W G13 740 T8 AP I G



LEDtube 16W G13 740 T8 AP I G

## Essential LEDtube

