



CorePro LED PLC 4P

CorePro LED PLC 9W 840 4P G24q-3

The CorePro LED PLC 4P integrates a LED light source into a traditional fluorescent form factor. This product is the ideal solution for uplamping in general lighting applications: it meets basic lighting requirements, offers significant energy savings and is environmentally friendly.

Product data

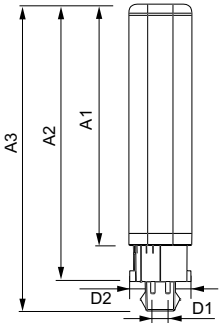
| General Information | | Warm-up time to 60% light (nom.) | |
|--|-----------------------|----------------------------------|--|
| Cap base | G24Q-3 [G24q-3] | | 0.5 s |
| EU RoHS compliant | Yes | Power factor (nom.) | 0.9 |
| Nominal lifetime (nom.) | 30000 h | Voltage (Nom) | 20-50 V |
| Switching cycle | 50,000X | Temperature | |
| Light Technical | | T-ambient (max.) | 35 °C |
| Colour Code | 840 [CCT of 4,000 K] | T-ambient (min.) | -20 °C |
| Technical Beam Angle (Nom) | 120 ° | T storage (max.) | 65 °C |
| Lamp Luminous Flux 25°C EL (Nom) | 1000 lm | T storage (min.) | -40 °C |
| Colour Designation | Cool White (CW) | T-Case maximum (nom.) | 76 °C |
| Colour Temperature, horizontal (Nom) | 4000 K | Controls and Dimming | |
| Lamp Luminous Efficacy EM (Nom) | 100.00 lm/W | Dimmable | No |
| Colour consistency | <6 | Mechanical and Housing | |
| Colour Rendering Index,horiz (Nom) | 83 | Product length | 200 mm |
| LLMF at end of nominal lifetime (nom.) | 70 % | Approval and Application | |
| Operating and Electrical | | Energy efficiency label (EEL) | A+ |
| Input frequency | 30000-80000 Hz | Energy-saving product | Yes |
| Power (Rated) (Nom) | 9 W | Approval marks | CE marking RoHS compliance KEMA Keur certificate |
| Lamp current (max.) | 400 mA | | |
| Lamp current (min.) | 250 mA | | |
| Starting time (nom.) | 0.5 s | | |

CorePro LED PLC 4P

| | |
|------------------------------------|----------------------------------|
| Energy consumption kWh/1,000 hours | 12 kWh |
| Product Data | |
| Full product code | 871869654117300 |
| Order product name | CorePro LED PLC 9W 840 4P G24q-3 |
| EAN/UPC – product | 8718696541173 |
| Order code | 929001200902 |

| | |
|-----------------------------------|--------------|
| SAP numerator – quantity per pack | 1 |
| Numerator – packs per outer box | 10 |
| SAP material | 929001200902 |
| SAP net weight (piece) | 0.088 kg |

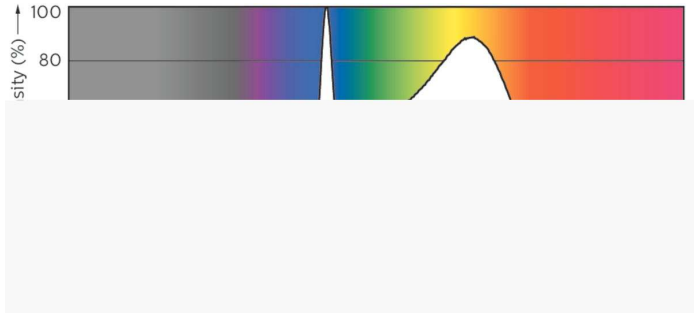
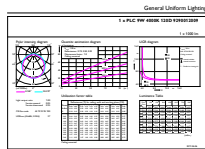
Dimensional drawing



LEDtube PLC 9W G24q-3/840 4P

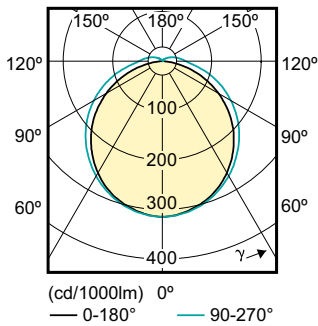
| Product | D1 | D2 | A1 | A2 | A3 |
|----------------------------------|---------|---------|----------|--------|----------|
| CorePro LED PLC 9W 840 4P G24q-3 | 24.3 mm | 28.4 mm | 128.8 mm | 148 mm | 163.6 mm |

Photometric data



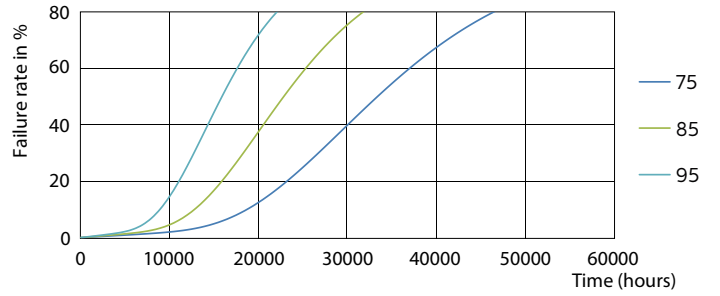
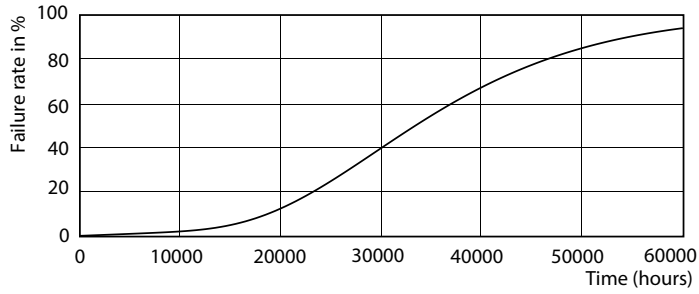
LEDtube PLC 100mm 9W G24Q-3 840 1000lm

LEDtube PLC 100mm 9W G24Q-3 840 1000lm



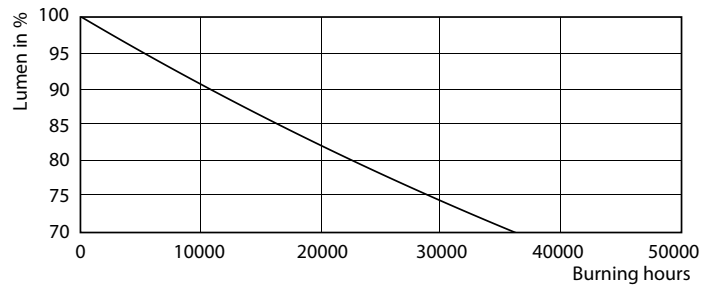
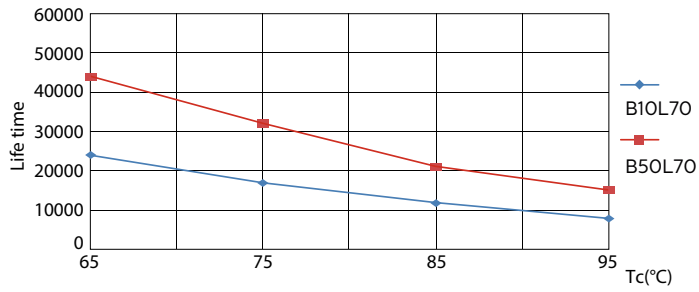
CorePro LED PLC 4P

Lifetime



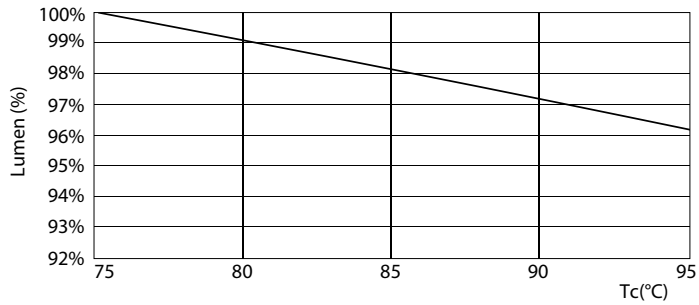
LEDtube PLC 100mm 9W G24Q-3 830 950lm

LEDtube PLC 100mm 9W G24Q-3 830 950lm



LEDtube PLC 100mm 9W G24Q-3 830 950lm

LEDtube PLC 100mm 9W G24Q-3 830 950lm



LEDtube PLC 100mm 9W G24Q-3 830 950lm

CorePro LED PLC 4P

