



# MASTER LEDtube EM/ Mains

## MASTER LEDtube 900mm HO 12W 840 T8

The Philips MASTER LEDtube integrates a LED light source into a traditional fluorescent form factor. Its unique design creates a perfectly uniform visual appearance which cannot be distinguished from traditional fluorescent. This product is the ideal solution for up lighting in general lighting applications.

### Warnings and Safety

• -

### Product data

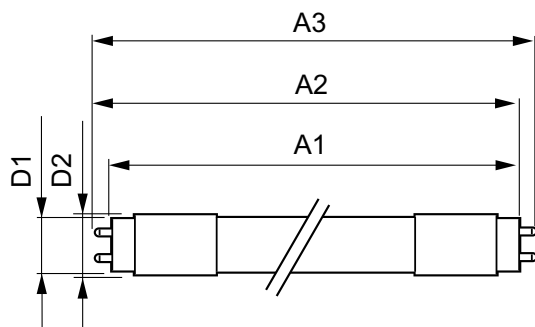
General Information		LLMF at end of nominal lifetime (nom.) 70 %	
Cap base	G13 ROT (Rotating) [ Medium Bi-Pin Fluorescent]		
EU RoHS compliant	Yes		
Nominal lifetime (nom.)	70000 h		
Switching cycle	200,000X		
	Sphere		
Light Technical		Operating and Electrical	
Colour Code	840 [ CCT of 4,000 K]	Input frequency	50 to 60 Hz
Technical Beam Angle (Nom)	160 °	Power (Rated) (Nom)	12 W
Lamp Luminous Flux 25°C EL (Nom)	1575 lm	Lamp current (max.)	60 mA
Colour Designation	Cool White (CW)	Lamp current (min.)	50 mA
Colour Temperature, horizontal (Nom)	4000 K	Starting time (nom.)	0.5 s
Lamp Luminous Efficacy EM (Nom)	131.00 lm/W	Warm-up time to 60% light (nom.)	0.5 s
Colour consistency	<6	Power factor (nom.)	0.9
Colour Rendering Index,horiz (Nom)	80	Voltage (Nom)	220-240 V
		Temperature	
		T-ambient (max.)	45 °C
		T-ambient (min.)	-20 °C
		T storage (max.)	65 °C
		T storage (min.)	-40 °C

# MASTER LEDtube EM/Mains

T-Case maximum (nom.)	50 °C
<b>Controls and Dimming</b>	
Dimmable	No
<b>Mechanical and Housing</b>	
Lamp Finish	Frosted
Bulb material	Plastic
Product length	900 mm
Bulb shape	Tube, double-ended
<b>Approval and Application</b>	
Energy Efficiency Class	E
Energy-saving product	Yes
Approval marks	RoHS compliance CE marking KEMA Keur certificate

Energy consumption kWh/1,000 hours	12 kWh
	403572
<b>Product Data</b>	
Full product code	871869668708600
Order product name	MASTER LEDtube 900mm HO 12W 840 T8
EAN/UPC – product	8718696687086
Order code	929001298402
SAP numerator – quantity per pack	1
Numerator – packs per outer box	10
SAP material	929001298402
SAP net weight (piece)	0.174 kg

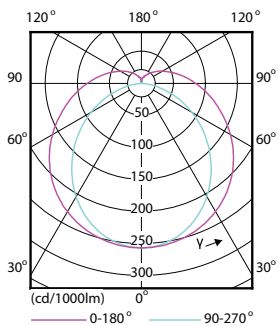
## Dimensional drawing



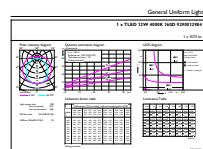
TLED 3ft 12W-30W 1575lm 160D 4000K G13ND

Product	D1	D2	A1	A2	A3
MASTER LEDtube 900mm HO 12W 840 T8	25.78 mm	28 mm	893.3 mm	900.4 mm	907.5 mm

## Photometric data



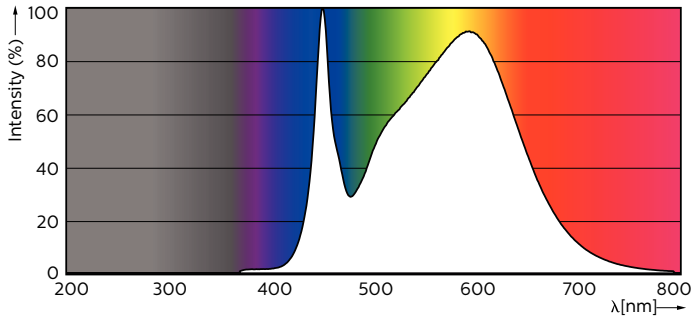
LEDtube 600mm 1200mm 1500mm UO T8



LEDtube 900mm HO 12W840 T8

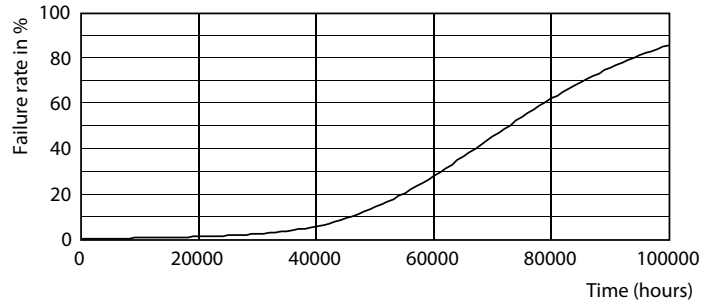
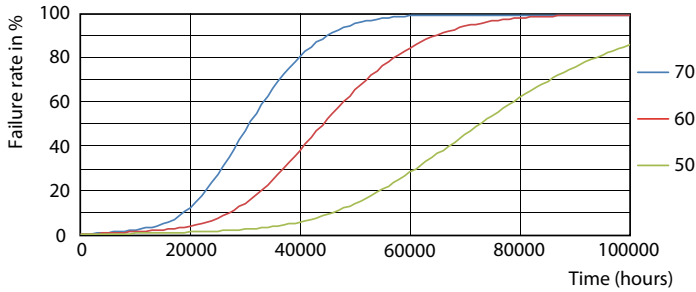
# MASTER LEDtube EM/Mains

## Photometric data



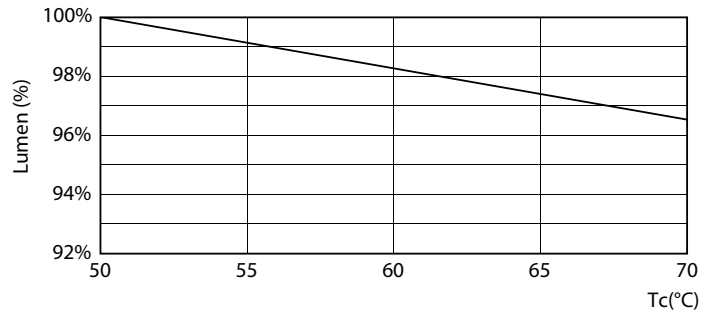
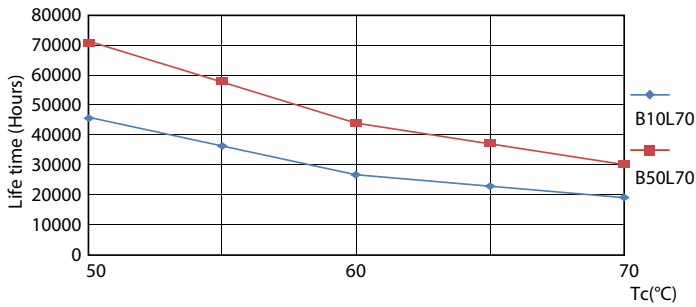
LEDtube 900mm HO 12W840 T8

## Lifetime



LEDtube MAS SLR 12,5W 70K FailureRate-LED-LED

LEDtube\_70K-LED

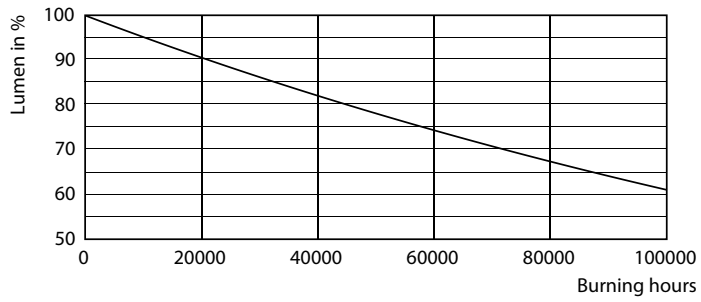


LEDtube MAS SLR 12,5W 70K LifetimeVsTc-LED-LED

LEDtube MAS SLR 12,5W 70K LumenVsTc-LMP-LMP

# MASTER LEDtube EM/Mains

## Lifetime



LEDtube\_70K-LMP

