



MASTER LEDtube InstantFit HF T5



Master LEDtube HF 600mm HE 8W 840 T5

Philips MASTER LEDtube InstantFit T5 integrates a LED light source into a traditional fluorescent form factor. Its unique design creates a perfectly uniform visual appearance which cannot be distinguished from traditional fluorescents. The Philips MASTER LEDtube InstantFit T5 is the ideal solution for customers who have higher light output requirements and want to maximise value over the lifetime. The full energy savings & longer lifetime result in attractive payback times and TCO benefits.

Product data

General Information	
Cap base	G5 [G5]
EU RoHS compliant	Yes
Nominal lifetime (nom.)	60000 h
Switching cycle	50,000X
	Sphere

Light Technical	
Colour Code	840 [CCT of 4,000 K]
Technical Beam Angle (Nom)	200 °
Lamp Luminous Flux 25°C EL (Nom)	1050 lm
Colour Designation	Cool White (CW)
Colour Temperature, horizontal (Nom)	4000 K
Lamp Luminous Efficacy EM (Nom)	131.00 lm/W
Colour consistency	<6
Colour Rendering Index,horiz (Nom)	80
LLMF at end of nominal lifetime (nom.)	70 %

Operating and Electrical	
Input frequency	30K to 100K Hz
Power (Rated) (Nom)	8 W
Lamp current (max.)	350 mA
Lamp current (min.)	150 mA
Starting time (nom.)	0.5 s
Warm-up time to 60% light (nom.)	0.5 s
Power factor (nom.)	0.92
Voltage (Nom)	40-70 V

Temperature	
T-ambient (max.)	45 °C
T-ambient (min.)	-20 °C
T storage (max.)	65 °C
T storage (min.)	-40 °C
T-Case maximum (nom.)	65 °C

MASTER LEDtube InstantFit HF T5

Controls and Dimming

Dimmable	Yes – Check ballast compatibility
----------	-----------------------------------

Mechanical and Housing

Lamp Finish	Frosted
Bulb material	Glass
Product length	600 mm
Bulb shape	Tube, double-ended

Approval and Application

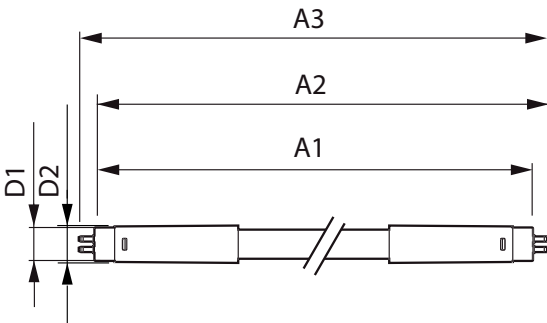
Energy Efficiency Class	E
Energy-saving product	Yes
Approval marks	TUV
Approval marks	RoHS compliance CE marking KEMA Keur certificate

Energy consumption kWh/1,000 hours	8 kWh
	406184

Product Data

Full product code	871869674325600
Order product name	Master LEDtube HF 600mm HE 8W 840 T5
EAN/UPC – product	8718696743256
Order code	929001390802
SAP numerator – quantity per pack	1
Numerator – packs per outer box	10
SAP material	929001390802
SAP net weight (piece)	0.080 kg

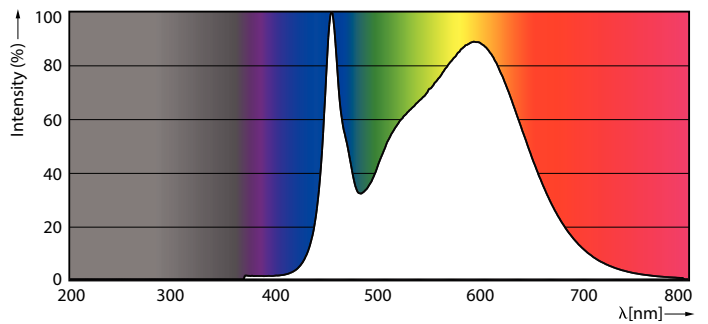
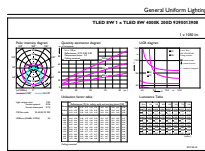
Dimensional drawing



TLED 600mm 230V8W-14W 1050lm 160D 4000K

Product	D1	D2	A1	A2	A3
Master LEDtube HF 600mm HE 8W 840 T5	15.5 mm	18.8 mm	549 mm	556.1 mm	563.2 mm

Photometric data

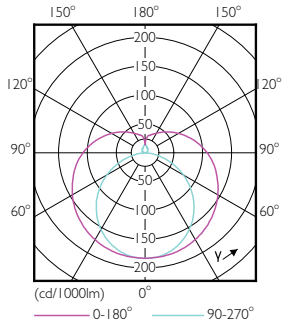


LEDtube 600mm 8W G5 840 1050lm

LEDtube 600mm 8W G5 840 1050lm

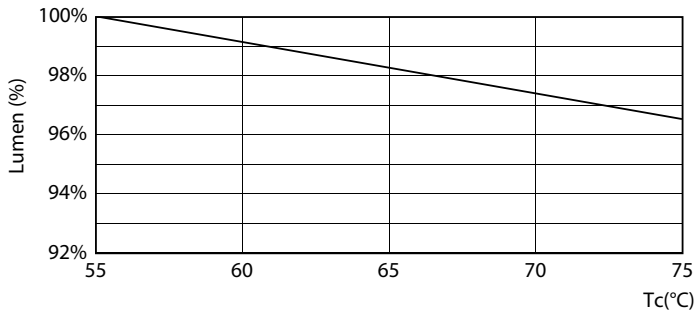
MASTER LEDtube InstantFit HF T5

Photometric data

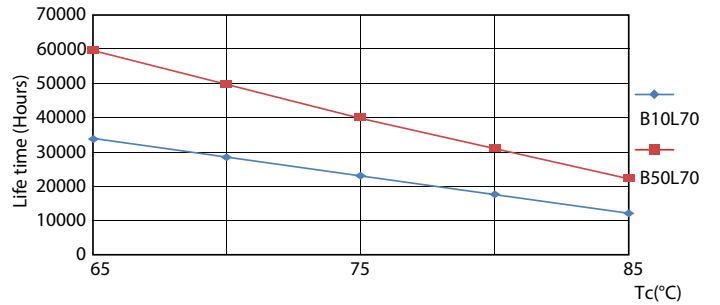


LEDtube 600mm 8W G5 830 1000lm

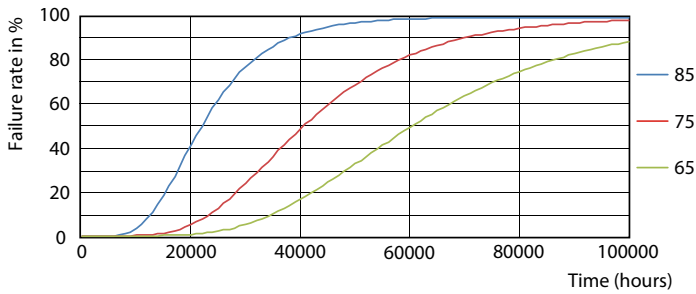
Lifetime



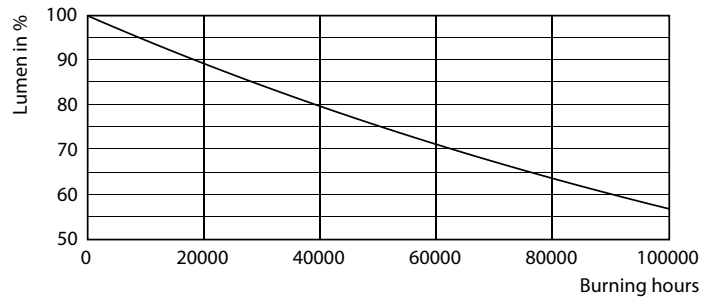
LEDtube MAS SLR 8W 60K LumenVsTc-LMP



LEDtube MAS SLR 8W 60K LifetimeVsTc-LED



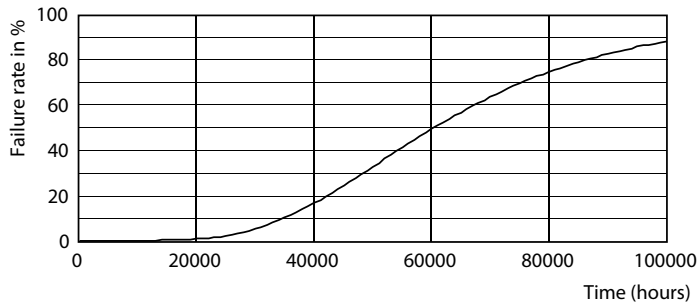
LEDtube MAS SLR 8W 60K FailureRate-LED



LEDtube_60K

MASTER LEDtube InstantFit HF T5

Lifetime



LEDtube_60K

