

MASTER Value LEDtube T8



MASTER LEDtube VLE 1500mm HO 20.5W 840 T8

A high-performance LED solution, the professional MASTER Value LED tube is ideal for replacing T8 fluorescent lamps using EM ballast or installing directly on the mains. This product provides a uniform lighting effect for use in all general lighting, as well as instant energy-efficiency, making for an environmentally friendly solution.

Product data

General Information	
Cap base	G13 [Medium Bi-Pin Fluorescent]
EU RoHS compliant	Yes
Nominal lifetime (nom.)	60000 h
Switching cycle	200,000X
	Sphere
Light Technical	
Colour Code	840 [CCT of 4,000 K]
Technical Beam Angle (Nom)	190 °
Lamp Luminous Flux 25°C EL (Nom)	3100 lm
Colour Designation	Cool White (CW)
Colour Temperature, horizontal (Nom)	4000 K
Lamp Luminous Efficacy EM (Nom)	151.00 lm/W
Colour consistency	<6
Colour Rendering Index,horiz (Nom)	80
LLMF at end of nominal lifetime (nom.)	70 %
Operating and Electrical	
Input frequency	50 to 60 Hz

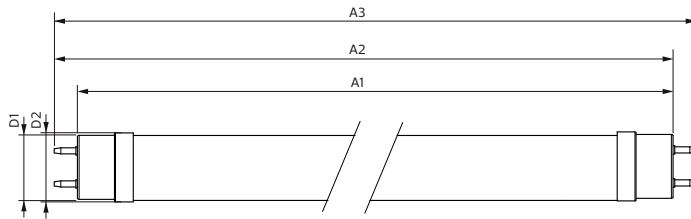
Power (Rated) (Nom)	20.5 W
Lamp current (max.)	97 mA
Lamp current (min.)	89 mA
Starting time (nom.)	0.5 s
Warm-up time to 60% light (nom.)	0.5 s
Power factor (nom.)	0.9
Voltage (Nom)	220-240 V
Temperature	
T-ambient (max.)	45 °C
T-ambient (min.)	-20 °C
T storage (max.)	65 °C
T storage (min.)	-40 °C
T-Case maximum (nom.)	65 °C
Controls and Dimming	
Dimmable	No
Mechanical and Housing	
Lamp Finish	Frosted

MASTER Value LEDtube T8

Bulb material	Glass
Product length	1500 mm
Bulb shape	Tube, double-ended
Approval and Application	
Energy Efficiency Class	D
Energy-saving product	Yes
Approval marks	RoHS compliance TUV CE marking KEMA Keur certificate
Energy consumption kWh/1,000 hours	21 kWh 403616

Product Data	
Full product code	871869964693600
Order product name	MASTER LEDtube VLE 1500mm HO 20.5W 840 T8
EAN/UPC – product	8718699646936
Order code	929002021802
SAP numerator – quantity per pack	1
Numerator – packs per outer box	10
SAP material	929002021802
SAP net weight (piece)	0.270 kg

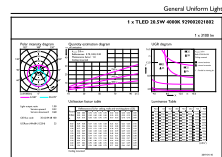
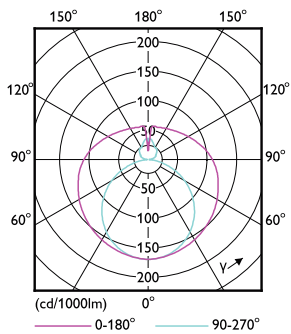
Dimensional drawing



Product	D1	D2	A1	A2	A3
MASTER LEDtube VLE 1500mm HO 20.5W 840 T8	25.8 mm	28 mm	1498.7 mm	1505.8 mm	1512.9 mm

TLED 5ft 220-240V20.5-58W3100lm4000K G13

Photometric data

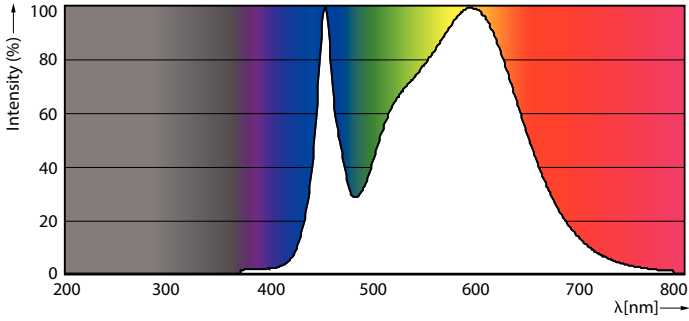


LEDtube 220-240V G13

LEDtube 220-240V G13 5ft 3100lm 4000k

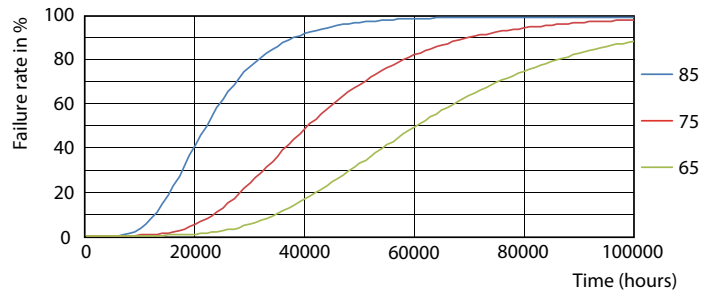
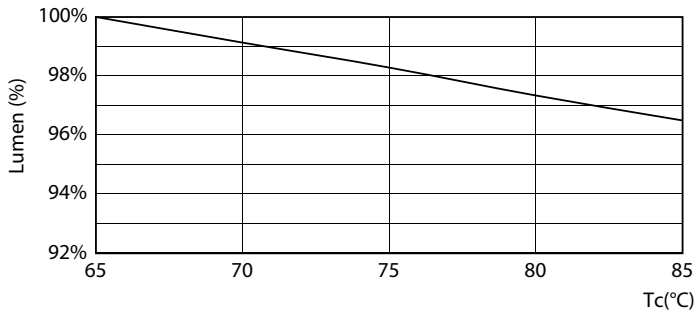
MASTER Value LEDtube T8

Photometric data



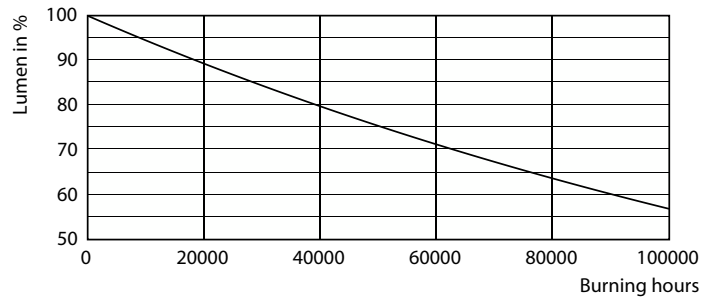
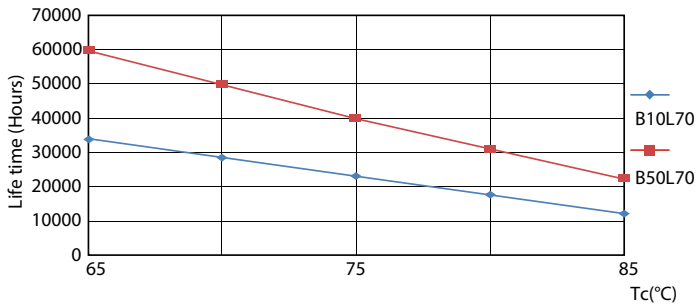
LEDtube 220-240V G13 4000k

Lifetime



LEDtube MAS SLR 20,5W 60K LumenVsTc-LMP

LEDtube MAS SLR 20,5W 60K FailureRate-LED



LEDtube MAS SLR 20,5W 60K LifetimeVsTc-LED

LEDtube_60K

MASTER Value LEDtube T8

Lifetime



LEDtube_60K

