



# Essential Smartbright T5 Batten

## BN058C LED11/WW L1200 GM

Polycarbonate

The BN058 Batten provides flexibility so customers can choose from three CCT and four different size and lumen packages, based on their specific needs.

### Product data

General Information		Approval and Application	
Lamp colour code	730 warm white	Ingress protection code	IP20 [ Finger-protected]
Optical cover/lens type	Polycarbonate	Mech. impact protection code	IK02 [ 0.2 J standard]
Control interface	-	<b>Initial Performance (IEC Compliant)</b>	
Protection class IEC	Safety class II (II)	Initial luminous flux (system flux)	1200 lm
CE mark	-	Luminous flux tolerance	+/-10%
Number of products on MCB (16 A type B)	8	Initial LED luminaire efficacy	85 lm/W
Light source engine type	LED	Lamp colour temperature	3000 K
<b>Operating and Electrical</b>		Colour Rendering Index	>70
Input Voltage	220 to 240 V	Initial input power	13 W
Input frequency	50 or 60 Hz	Power consumption tolerance	+/-10%
Power factor (min.)	0.5		
<b>Controls and Dimming</b>			
Dimmable	No		
<b>Mechanical and Housing</b>			
Housing material	Polycarbonate		
Optical cover/lens material	Polycarbonate		
Optical cover/lens finish	Opal		
Overall length	1185 mm		
Overall width	21 mm		
Overall height	32.3 mm		
Colour	White		

# Essential Smartbright T5 Batten

## Application Conditions

Ambient temperature range -20 to +40 °C

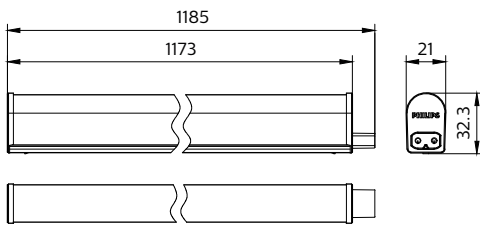
## Product Data

Full product code 871016331394899  
Order product name BN058C LED11/WW L1200 GM  
EAN/UPC – product 8710163313948  
Order code 911401709522

SAP numerator – quantity per pack	1
Numerator – packs per outer box	24
SAP material	911401709522
SAP net weight (piece)	0.140 kg



## Dimensional drawing



Batten LED

