



Essential Smartbright T5 Batten

BN058C LED11/NW L1200 GM

Polycarbonate

The BN058 Batten provides flexibility so customers can choose from three CCT and four different size and lumen packages, based on their specific needs.

Product data

General Information		Optical cover/lens finish	
Lamp colour code	740 neutral white	Optical cover/lens finish	Opal
Optical cover/lens type	Polycarbonate	Overall length	1185 mm
Control interface	-	Overall width	21 mm
Protection class IEC	Safety class II (II)	Overall height	32.3 mm
CE mark	-	Colour	White
Number of products on MCB (16 A type B)	8	Approval and Application	
Light source engine type	LED	Ingress protection code	IP20 [Finger-protected]
Operating and Electrical		Mech. impact protection code	IK02 [0.2 J standard]
Input Voltage	220 to 240 V	Initial Performance (IEC Compliant)	
Input frequency	50 or 60 Hz	Initial luminous flux (system flux)	1200 lm
Power factor (min.)	0.5	Luminous flux tolerance	+/-10%
Controls and Dimming		Initial LED luminaire efficacy	85 lm/W
Dimmable	No	Lamp colour temperature	4000 K
Mechanical and Housing		Colour Rendering Index	>70
Housing material	Polycarbonate	Initial input power	13 W
Optical cover/lens material	Polycarbonate	Power consumption tolerance	+/-10%

Essential Smartbright T5 Batten

Application Conditions

Ambient temperature range -20 to +40 °C

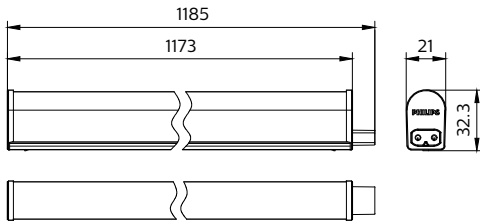
Product Data

Full product code 871016331395599
Order product name BN058C LED11/NW L1200 GM
EAN/UPC – product 8710163313955
Order code 911401709532

SAP numerator – quantity per pack	1
Numerator – packs per outer box	24
SAP material	911401709532
SAP net weight (piece)	0.140 kg



Dimensional drawing



Batten LED

