



Essential Smartbright T5 Batten

BN058C LED11/CW L1200 GM

Polycarbonate

The BN058 Batten provides flexibility so customers can choose from three CCT and four different size and lumen packages, based on their specific needs.

Product data

General Information		Approval and Application	
Lamp colour code	765 cool daylight	Ingress protection code	IP20 [Finger-protected]
Optical cover/lens type	Polycarbonate	Mech. impact protection code	IK02 [0.2 J standard]
Control interface	-		
Protection class IEC	Safety class II (II)	Initial Performance (IEC Compliant)	
CE mark	-	Initial luminous flux (system flux)	1200 lm
Number of products on MCB (16 A type B)	8	Luminous flux tolerance	+/-10%
Light source engine type	LED	Initial LED luminaire efficacy	85 lm/W
Operating and Electrical		Lamp colour temperature	6500 K
Input Voltage	220 to 240 V	Colour Rendering Index	>70
Input frequency	50 or 60 Hz	Initial input power	13 W
Power factor (min.)	0.5	Power consumption tolerance	+/-10%
Controls and Dimming			
Dimmable	No		
Mechanical and Housing			
Housing material	Polycarbonate		
Optical cover/lens material	Polycarbonate		
Optical cover/lens finish	Opal		
Overall length	1185 mm		
Overall width	21 mm		
Overall height	32.3 mm		
Colour	White		

Essential Smartbright T5 Batten

Application Conditions

Ambient temperature range -20 to +40 °C

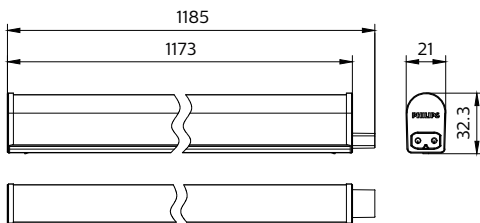
Product Data

Full product code 871016331396299
Order product name BN058C LED11/CW L1200 GM
EAN/UPC – product 8710163313962
Order code 911401709542

SAP numerator – quantity per pack	1
Numerator – packs per outer box	24
SAP material	911401709542
SAP net weight (piece)	0.140 kg



Dimensional drawing



Batten LED

