



# Xitanium Outdoor LED Drivers Dimmable (1-10 V)

## Xitanium Dim 250W 0.7A 1-10V 230V Q

LED-based light sources are an excellent solution for outdoor environments. They are long-lasting and low-maintenance. However, to get the best out of the LEDs, these light sources require highly reliable and efficient LED drivers. Philips Xitanium Dimmable (1-10 V) Output LED Outdoor Drivers are specifically designed to deliver reliable performance and protection while meeting strict performance, approval and application requirements.

### Product data

General Information		Output power (nom.)	
Number of products on MCB (16 A type B) (max.)	4		124.6-250 W
Operating and Electrical		Output voltage	
Input frequency	50 to 60 Hz		178-357 V
Output current ripple (max.)	15 %	Default output current	700 mA
Maximum efficiency	93 %	Inrush current width to 50% of peak	482 µs
Output current (max.)	700 mA	Energy metering	False
Output current (nom.)	700 mA	Constant current (CC)	True
Output current tolerance (max.)	5 %	Constant voltage (CV)	False
Output current tolerance (min.)	-5 %	Diagnostics	False
Input voltage (AC)	220-240 V	Wiring	
Power factor (min.)	0.95	Connector type input terminals	cable
Input current (nom.)	1.245 A	Hot-wiring	No
Inrush current peak (max.)	53.4 A	Connector type output terminals	cable
		Output wire cross section (max.)	1.5 mm <sup>2</sup>
		Output wire cross section (min.)	0.25 mm <sup>2</sup>
		Cable length from device to lamp	0.6 m

## Xitanium Outdoor LED Drivers Dimmable (1-10 V)

Input wire strip length	9-10 mm
Output wire strip length	9-10 mm
Input wire cross section (max.)	1.5 mm <sup>2</sup>
Input wire cross section (min.)	0.25 mm <sup>2</sup>

### Temperature

T-ambient (max.)	55 °C
T-ambient (min.)	-40 °C
T storage (max.)	80 °C
T storage (min.)	-40 °C
T-case lifetime (nom.)	70 °C
T-Case maximum (max.)	80 °C

### Controls and Dimming

Dimmable	Yes
Control interface	1-10V
Dimming range	100-10 %

### Mechanical and Housing

Housing	Q-can
Housing dimensions	215.8 x 89.4 x 42

### Approval and Application

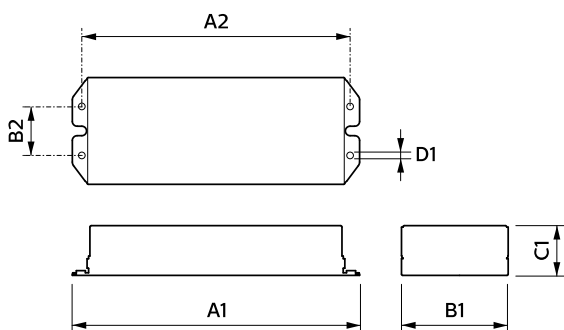
Surge protection (common/differential)	4/4 kV
--	--------

Relative humidity (operation) (max.)	95 %
Relative humidity (operation) (min.)	10 %
Relative humidity (storage)	10-95 %
Isolation classification	Class I
Short-circuit protection	Protected
Over power protection	Protected
Open circuit protection	Protected
Approval marks	CCC certificate CE marking
Corridor mode	False

### Product Data

Full product code	694793916957300
Order product name	Xitanium Dim 250W 0.7A 1-10V 230V Q
EAN/UPC – product	6947939169573
Order code	929000838508
SAP numerator – quantity per pack	1
Numerator – packs per outer box	9
SAP material	929000838508
SAP net weight (piece)	1.305 kg

## Dimensional drawing



Xitanium Dim 250W 0.70A 1-10V 230V Q

Product	A1	B1	C1	A2	D1
Xitanium Dim 250W 0.7A 1-10V 230V Q	240.8 mm	89.4 mm	42 mm	224.62 mm	6.34 mm

