



# MASTER LEDtube InstantFit HF T5

## Master LEDtube HF 600mm HE 8W 865 T5

The Philips MASTER LEDtube integrates an LED light source into a traditional fluorescent form factor. Its unique design creates a perfectly uniform visual appearance, which cannot be distinguished from traditional fluorescents. These T5 lighting tubes are the right choice for absolute performance and are designed to stand up to everyday conditions. Unparalleled savings, thanks to low energy consumption and an exceptionally long lifetime, make these T5 LED tubes the choice for every demanding applications.

### Product data

General Information		Operating and Electrical	
Cap base	G5 [ G5]	Input frequency	30K to 100K Hz
EU RoHS compliant	Yes	Power (Rated) (Nom)	8 W
Nominal lifetime (nom.)	60000 h	Lamp current (max.)	350 mA
Switching cycle	50,000X	Lamp current (min.)	150 mA
	Sphere	Starting time (nom.)	0.5 s
		Warm-up time to 60% light (nom.)	0.5 s
		Power factor (nom.)	0.92
		Voltage (Nom)	40-70 V
Light Technical		Temperature	
Colour Code	865 [ CCT of 6,500 K]	T-ambient (max.)	45 °C
Technical Beam Angle (Nom)	200 °	T-ambient (min.)	-20 °C
Lamp Luminous Flux 25°C EL (Nom)	1050 lm	T storage (max.)	65 °C
Colour Designation	Cool Daylight	T storage (min.)	-40 °C
Colour Temperature, horizontal (Nom)	6500 K	T-Case maximum (nom.)	65 °C
Lamp Luminous Efficacy EM (Nom)	131.00 lm/W		
Colour consistency	<6		
Colour Rendering Index,horiz (Nom)	80		
LLMF at end of nominal lifetime (nom.)	70 %		

# MASTER LEDtube InstantFit HF T5

## Controls and Dimming

**Dimmable** Yes – Check ballast compatibility

## Mechanical and Housing

**Lamp Finish** Frosted  
**Bulb material** Glass  
**Product length** 600 mm  
**Bulb shape** Tube, double-ended

## Approval and Application

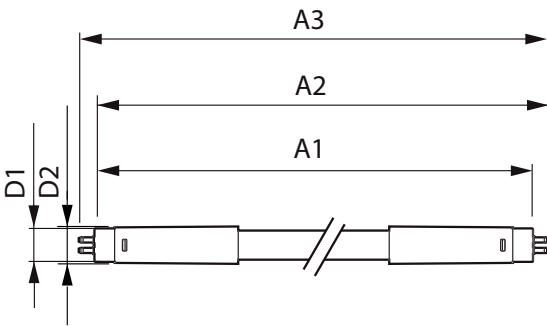
**Energy Efficiency Class** E  
**Energy-saving product** Yes  
**Approval marks** RoHS compliance TUV CE marking KEMA Keur certificate

**Energy consumption kWh/1,000 hours** 8 kWh  
 406185

## Product Data

**Full product code** 871869674327000  
**Order product name** Master LEDtube HF 600mm HE 8W 865 T5  
**EAN/UPC – product** 8718696743270  
**Order code** 929001390902  
**SAP numerator – quantity per pack** 1  
**Numerator – packs per outer box** 10  
**SAP material** 929001390902  
**SAP net weight (piece)** 0.080 kg

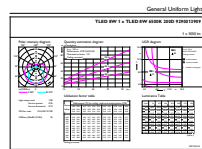
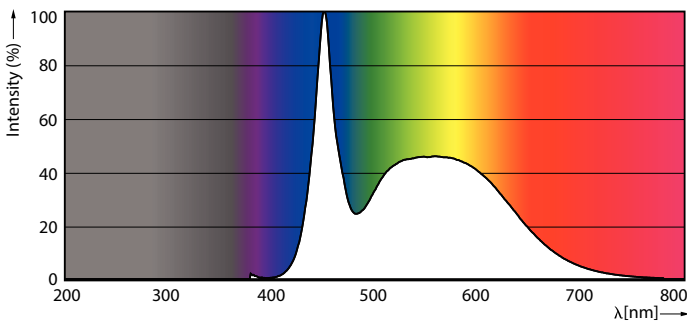
## Dimensional drawing



Master LEDtube HF 600mm HE 8W 865 T5

Product	D1	D2	A1	A2	A3
Master LEDtube HF 600mm HE 8W 865 T5	15.5 mm	18.8 mm	549 mm	556.1 mm	563.2 mm

## Photometric data



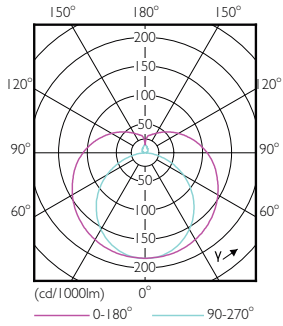
LEDtube 600mm 8W G5 865 1050lm

LEDtubes, TLED T12 120-277V 20W 6500K G13

LEDtube 600mm 8W G5 865 1050lm

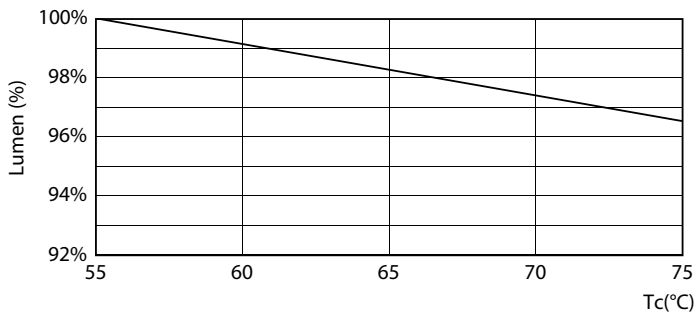
# MASTER LEDtube InstantFit HF T5

## Photometric data

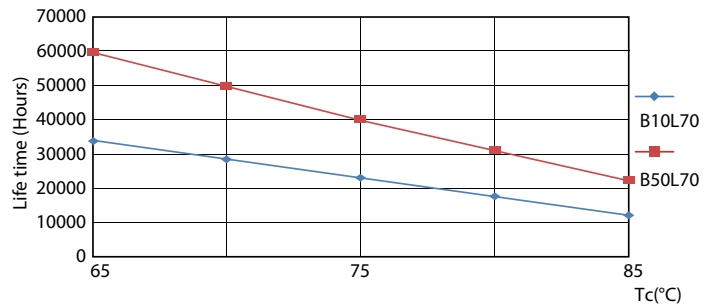


LEDtube 600mm 8W G5 830 1000lm

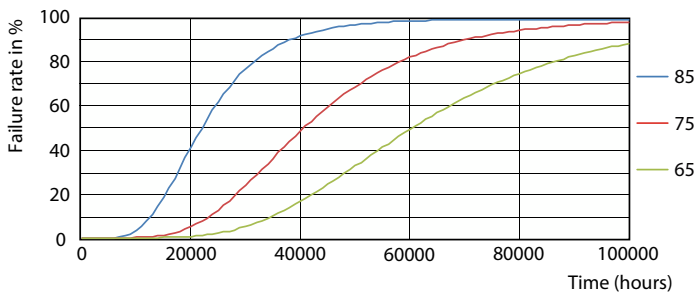
## Lifetime



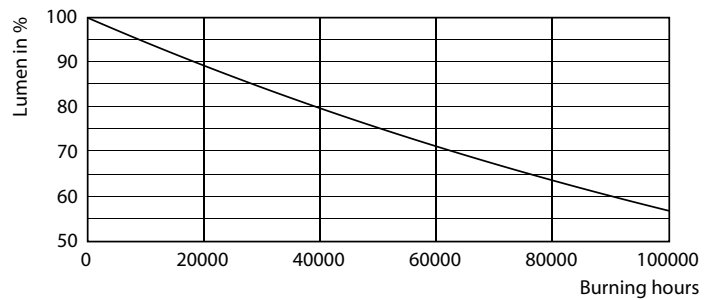
LumenVsTc



LifetimeVsTc



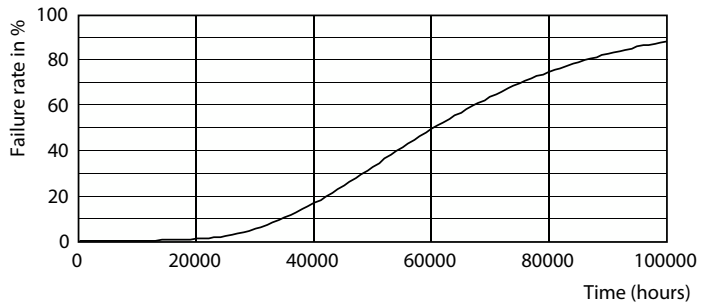
FailureRate



Lumen Maintenance Diagram

# MASTER LEDtube InstantFit HF T5

## Lifetime



### Life Expectancy Diagram

