



# MASTER LEDtube InstantFit HF T5



## Master LEDtube HF 1200mm HE 16.5W 865 T5

Philips MASTER LEDtube InstantFit T5 integrates a LED light source into a traditional fluorescent form factor. Its unique design creates a perfectly uniform visual appearance which cannot be distinguished from traditional fluorescents. The Philips MASTER LEDtube InstantFit T5 is the ideal solution for customers who have higher light output requirements and want to maximise value over the lifetime. The full energy savings & longer lifetime result in attractive payback times and TCO benefits.

### Product data

General Information	
Cap base	G5 [ G5]
EU RoHS compliant	Yes
Nominal lifetime (nom.)	60000 h
Switching cycle	50,000X
	Sphere

Light Technical	
Colour Code	865 [ CCT of 6,500 K]
Technical Beam Angle (Nom)	200 °
Lamp Luminous Flux 25°C EL (Nom)	2500 lm
Colour Designation	Cool Daylight
Colour Temperature, horizontal (Nom)	6500 K
Lamp Luminous Efficacy EM (Nom)	151.00 lm/W
Colour consistency	<6
Colour Rendering Index,horiz (Nom)	80
LLMF at end of nominal lifetime (nom.)	70 %

Operating and Electrical	
Input frequency	30K to 100K Hz
Power (Rated) (Nom)	16.5 W
Lamp current (max.)	350 mA
Lamp current (min.)	150 mA
Starting time (nom.)	0.5 s
Warm-up time to 60% light (nom.)	0.5 s
Power factor (nom.)	0.92
Voltage (Nom)	70-120 V

Temperature	
T-ambient (max.)	45 °C
T-ambient (min.)	-20 °C
T storage (max.)	65 °C
T storage (min.)	-40 °C
T-Case maximum (nom.)	65 °C

# MASTER LEDtube InstantFit HF T5

## Controls and Dimming

**Dimmable** Yes – Check ballast compatibility

## Mechanical and Housing

**Lamp Finish** Frosted  
**Bulb material** Glass  
**Product length** 1200 mm  
**Bulb shape** Tube, double-ended

## Approval and Application

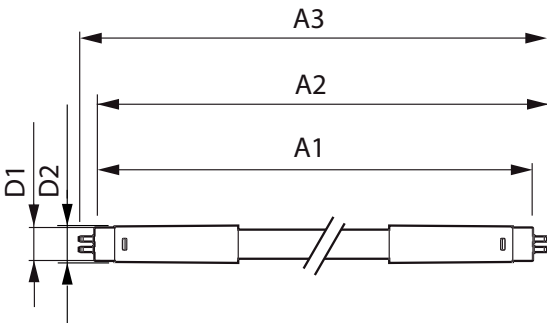
**Energy Efficiency Class** D  
**Energy-saving product** Yes  
**Approval marks** TUV  
**Approval marks** RoHS compliance CE marking KEMA Keur certificate

**Energy consumption kWh/1,000 hours** 17 kWh  
 406188

## Product Data

**Full product code** 871869674333100  
**Order product name** Master LEDtube HF 1200mm HE 16.5W 865 T5  
**EAN/UPC – product** 8718696743331  
**Order code** 929001391202  
**SAP numerator – quantity per pack** 1  
**Numerator – packs per outer box** 10  
**SAP material** 929001391202  
**SAP net weight (piece)** 0.159 kg

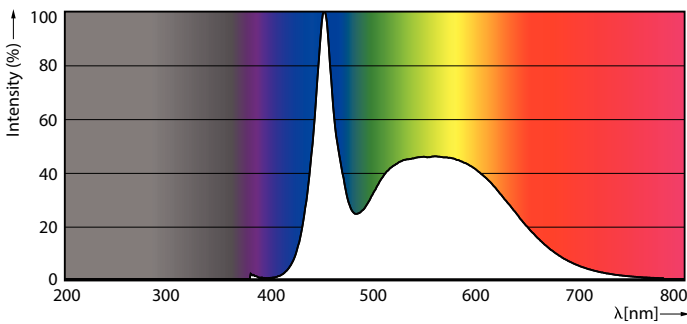
## Dimensional drawing



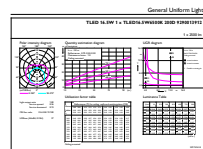
TLED 1200mm 230V14W-28W 2100lm 160D 650

Product	D1	D2	A1	A2	A3
Master LEDtube HF 1200mm HE 16.5W 865 T5	15.5 mm	18.8 mm	1149 mm	1156.1 mm	1163.2 mm

## Photometric data



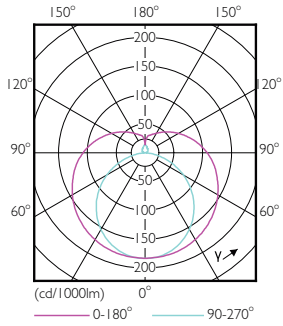
LEDtubes, TLED T12 120-277V 20W 6500K G13



LEDtube 1200mm 16-5W G5 865 2500lm

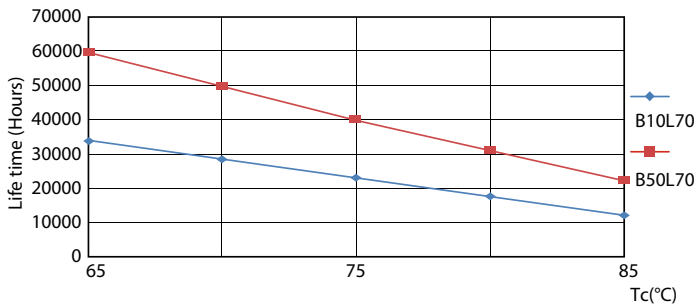
# MASTER LEDtube InstantFit HF T5

## Photometric data

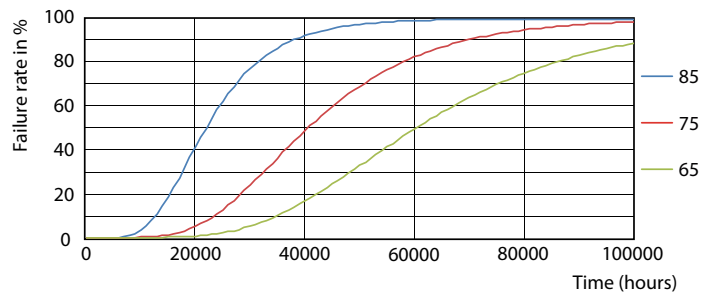


LEDtube 600mm 8W G5 830 1000lm

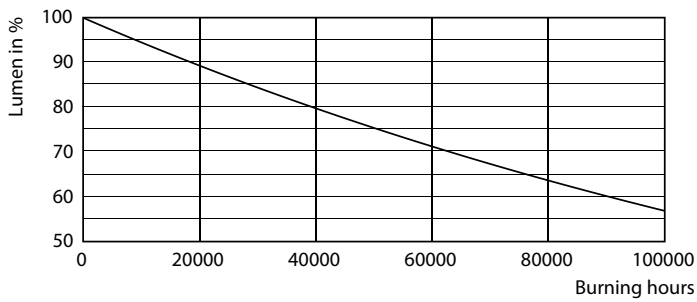
## Lifetime



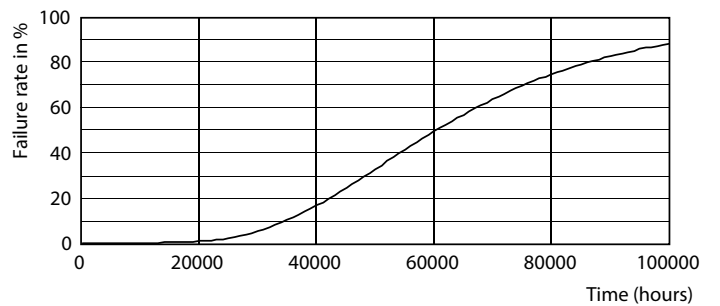
LEDtube MAS SLR 8W 60K LifetimeVsTc-LED



LEDtube MAS SLR 8W 60K FailureRate-LED



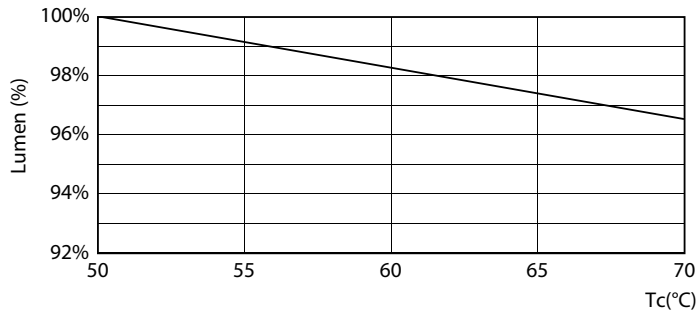
LEDtube\_60K



LEDtube\_60K

# MASTER LEDtube InstantFit HF T5

## Lifetime



LEDtube MAS SLR 16,5W 60K LumenVsTc-LMP

