



# MASTER LEDtube InstantFit HF T5

## Master LEDtube HF 1200mm HO 26W 840 T5 OE

The Philips MASTER LEDtube integrates an LED light source into a traditional fluorescent form factor. Its unique design creates a perfectly uniform visual appearance, which cannot be distinguished from traditional fluorescents. These T5 lighting tubes are the right choice for absolute performance and are designed to stand up to everyday conditions. Unparalleled savings, thanks to low energy consumption and an exceptionally long lifetime, make these T5 LED tubes the choice for every demanding applications.

### Product data

General Information	
Cap base	G5 [ G5]
EU RoHS compliant	Yes
Nominal lifetime (nom.)	60000 h
Switching cycle	50,000X
Technical type	26-54W
	Sphere

Light Technical	
Colour Code	840 [ CCT of 4,000 K]
Technical Beam Angle (Nom)	200 °
Lamp Luminous Flux 25°C EL (Nom)	3900 lm
Colour Designation	Cool White (CW)
Colour Temperature, horizontal (Nom)	4000 K
Lamp Luminous Efficacy EM (Nom)	150.00 lm/W
Colour consistency	<6
Colour Rendering Index,horiz (Nom)	80

LLMF at end of nominal lifetime (nom.) 70 %	
---	--

Operating and Electrical	
Input frequency	30 K to 60 K Hz
Power (Rated) (Nom)	26 W
Lamp current (max.)	620 mA
Lamp current (min.)	300 mA
Starting time (nom.)	0.5 s
Warm-up time to 60% light (nom.)	0.5 s
Power factor (nom.)	0.9
Voltage (Nom)	20-90 V

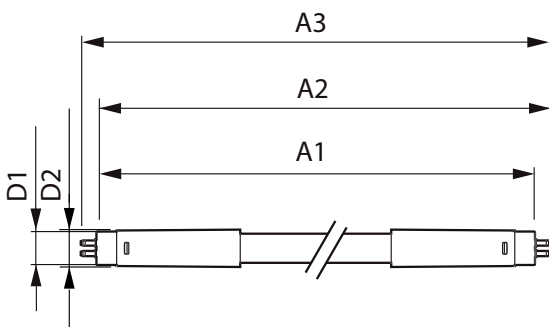
Temperature	
T-ambient (max.)	45 °C
T-ambient (min.)	-20 °C
T storage (max.)	65 °C
T storage (min.)	-40 °C

# MASTER LEDtube InstantFit HF T5

T-Case maximum (nom.)	55 °C
<b>Controls and Dimming</b>	
Dimmable	Yes – Check ballast compatibility
<b>Mechanical and Housing</b>	
Lamp Finish	Frosted
Bulb material	Glass
Product length	1200 mm
Bulb shape	Tube, double-ended
<b>Approval and Application</b>	
Energy Efficiency Class	D
Energy-saving product	Yes
Approval marks	RoHS compliance TUV CE marking KEMA Keur certificate

Energy consumption kWh/1,000 hours	26 kWh
	406210
<b>Product Data</b>	
Full product code	871869974953800
Order product name	Master LEDtube HF 1200mm HO 26W 840 T5 OE
EAN/UPC – product	8718699749538
Order code	929002352102
SAP numerator – quantity per pack	1
Numerator – packs per outer box	10
SAP material	929002352102
SAP net weight (piece)	0.240 kg

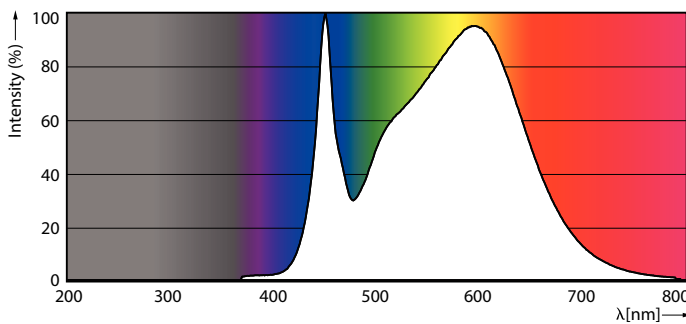
## Dimensional drawing



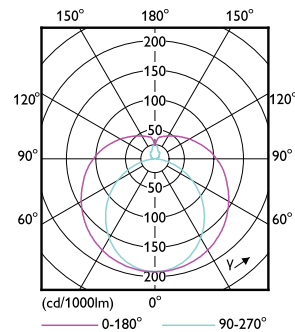
Master LEDtube HF 1200mm HO 26W 840 T5 OE

Product	D1	D2	A1	A2	A3
Master LEDtube HF 1200mm HO 26W 840 T5 OE	15.5 mm	19 mm	1149 mm	1156 mm	1163 mm

## Photometric data



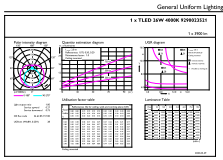
LEDtube MAS 26W G5 3900lm 840



LEDtube MAS 26W G5 3700lm

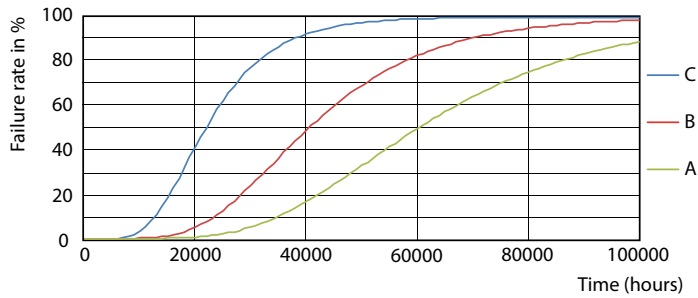
# MASTER LEDtube InstantFit HF T5

## Photometric data

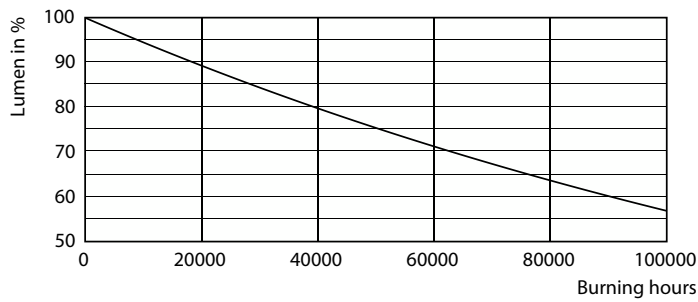


LEDtube MAS 26W G5 3900lm 840 1200mm

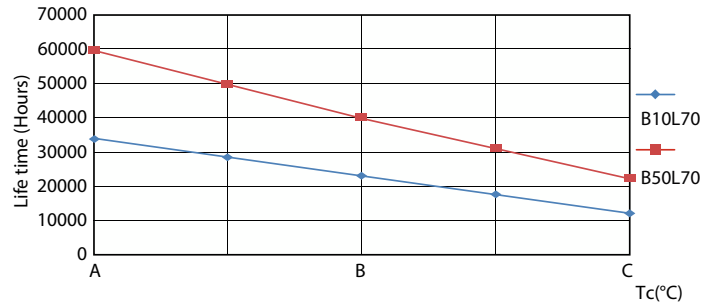
## Lifetime



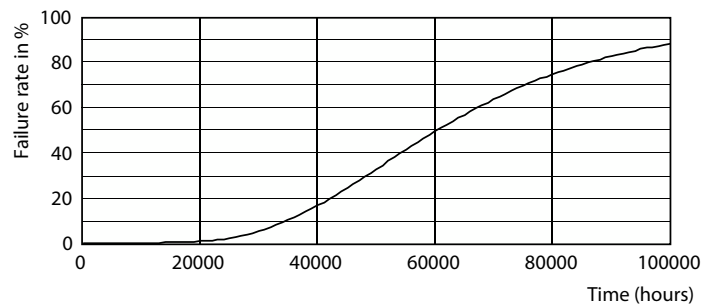
FailureRate



Lumen Maintenance Diagram



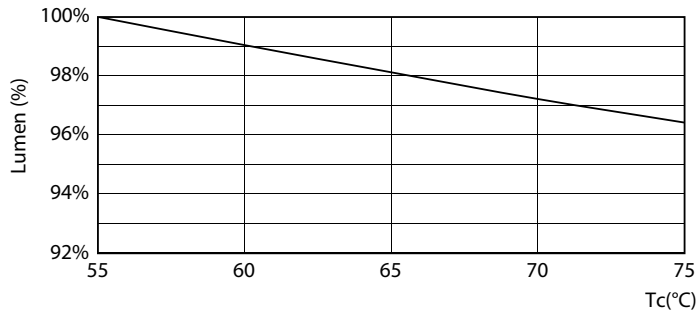
LifetimeVsTc



Life Expectancy Diagram

# MASTER LEDtube InstantFit HF T5

## Lifetime



LEDtube 26W 60K LumenVsTc 1

