



MASTER LEDtube InstantFit HF T5



Master LEDtube HF 1500mm HO 26W 840 T5 OE

Philips MASTER LEDtube InstantFit T5 integrates a LED light source into a traditional fluorescent form factor. Its unique design creates a perfectly uniform visual appearance which cannot be distinguished from traditional fluorescents. The Philips MASTER LEDtube InstantFit T5 is the ideal solution for customers who have higher light output requirements and want to maximise value over the lifetime. The full energy savings & longer lifetime result in attractive payback times and TCO benefits.

Product data

General Information	
Cap base	G5 [G5]
EU RoHS compliant	Yes
Nominal lifetime (nom.)	60000 h
Switching cycle	50,000X
Technical type	26-49W
	Sphere

Light Technical	
Colour Code	840 [CCT of 4,000 K]
Technical Beam Angle (Nom)	200 °
Lamp Luminous Flux 25°C EL (Nom)	3900 lm
Colour Designation	Cool White (CW)
Colour Temperature, horizontal (Nom)	4000 K
Lamp Luminous Efficacy EM (Nom)	150.00 lm/W
Colour consistency	<6
Colour Rendering Index,horiz (Nom)	80
LLMF at end of nominal lifetime (nom.)	70 %

Operating and Electrical	
Input frequency	20 K to 140 K Hz
Power (Rated) (Nom)	26 W
Lamp current (max.)	420 mA
Lamp current (min.)	150 mA
Starting time (nom.)	0.5 s
Warm-up time to 60% light (nom.)	0.5 s
Power factor (nom.)	0.9
Voltage (Nom)	60-120 V

Temperature	
T-ambient (max.)	45 °C
T-ambient (min.)	-20 °C
T storage (max.)	65 °C
T storage (min.)	-40 °C
T-Case maximum (nom.)	50 °C

MASTER LEDtube InstantFit HF T5

Controls and Dimming

Dimmable	Yes – Check ballast compatibility
----------	-----------------------------------

Mechanical and Housing

Lamp Finish	Frosted
Bulb material	Glass
Product length	1500 mm
Bulb shape	Tube, double-ended

Approval and Application

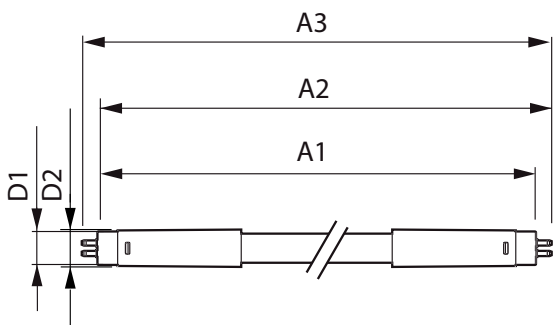
Energy Efficiency Class	D
Energy-saving product	Yes
Approval marks	TUV
Approval marks	RoHS compliance CE marking KEMA Keur certificate

Energy consumption kWh/1,000 hours	26 kWh
	406213

Product Data

Full product code	871869974959000
Order product name	Master LEDtube HF 1500mm HO 26W 840 T5
	OE
EAN/UPC – product	8718699749590
Order code	929002352402
SAP numerator – quantity per pack	1
Numerator – packs per outer box	10
SAP material	929002352402
SAP net weight (piece)	0.380 kg

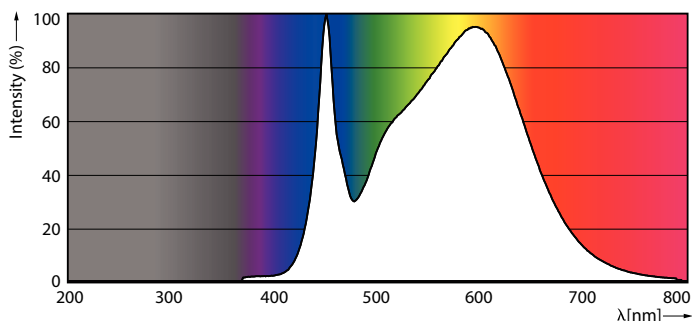
Dimensional drawing



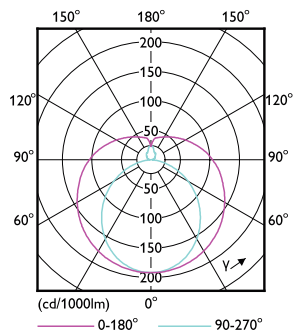
TLED 1500mm HF 26W 3900lm 4000K G5

Product	D1	D2	A1	A2	A3
Master LEDtube HF 1500mm HO 26W 840 T5 OE	15.5 mm	19 mm	1449 mm	1456 mm	1463 mm

Photometric data



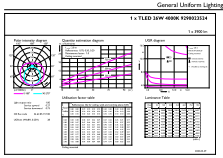
LEDtube MAS 26W G5 3900lm 840



LEDtube MAS 26W G5 3700lm

MASTER LEDtube InstantFit HF T5

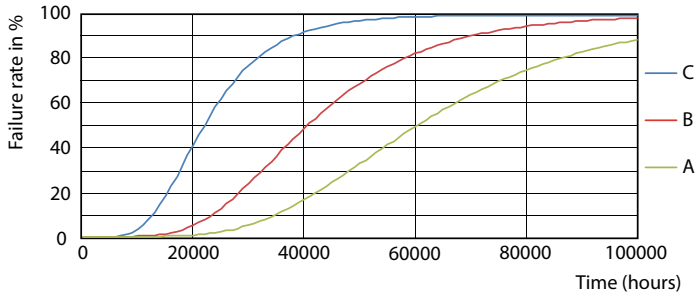
Photometric data



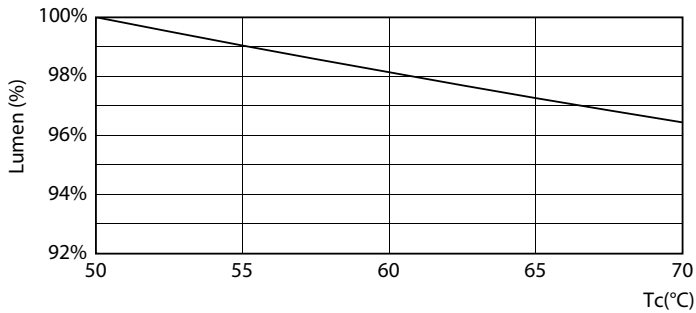
© 2022 Philips Lighting B.V. Page 10/11

LEDtube MAS 26W G5 3900lm 840 1500mm

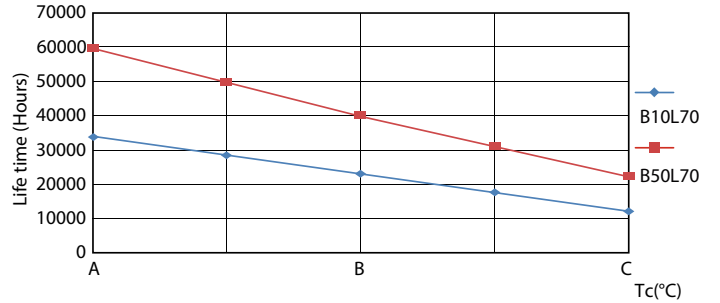
Lifetime



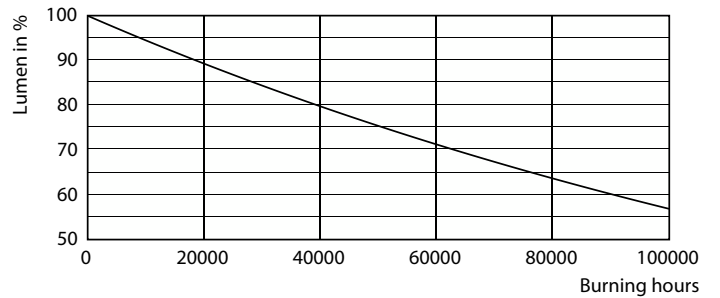
LEDtube_60K_FailureRate



LEDtube 26W 60K LumenVsTc 2



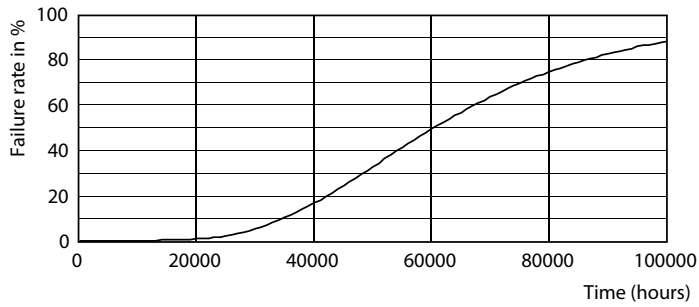
LEDtube_60K_LifetimeVsTc



LEDtube_60K

MASTER LEDtube InstantFit HF T5

Lifetime



LEDtube_60K

