



# MASTER LEDtube Mains T5

## MASTER LEDtube 600mm HE 8W 865 T5

The new Philips Master LEDtube Mains T5 brings simplicity to your lighting project. You don't need to pay attention to the driver technology anymore. Thanks to a unique design, Philips MASTER LEDtube Mains T5 installs in luminaires operating on mains power connection. So simple to operate! Perfectly safe, reliable & easy to install, the Philips MASTER LEDtube Mains T5 is the ideal alternative to standard fluorescent tubes to maximise value over lifetime with high energy savings and lower maintenance costs.

### Product data

General Information	
Cap base	G5 [ G5]
EU RoHS compliant	Yes
Nominal lifetime (nom.)	50000 h
Switching cycle	200,000X
Technical type	8-14W

Light Technical	
Colour Code	865 [ CCT of 6,500 K]
Technical Beam Angle (Nom)	200 °
Lamp Luminous Flux 25°C EL (Nom)	1050 lm
Colour Designation	Cool Daylight
Colour Temperature, horizontal (Nom)	6500 K
Lamp Luminous Efficacy EM (Nom)	131.00 lm/W
Colour consistency	<6
Colour Rendering Index,horiz (Nom)	80
LLMF at end of nominal lifetime (nom.)	70 %

Operating and Electrical	
Input frequency	50 to 60 Hz
Power (Rated) (Nom)	8 W
Lamp current (max.)	90 mA
Lamp current (min.)	35 mA
Starting time (nom.)	0.5 s
Warm-up time to 60% light (nom.)	0.5 s
Power factor (nom.)	0.9
Voltage (Nom)	100-240 V

Temperature	
T-ambient (max.)	45 °C
T-ambient (min.)	-20 °C
T storage (max.)	65 °C
T storage (min.)	-40 °C
T-Case maximum (nom.)	60 °C

# MASTER LEDtube Mains T5

## Controls and Dimming

Dimmable	No
----------	----

## Mechanical and Housing

Lamp Finish	Frosted
Bulb material	Glass
Product length	600 mm
Bulb shape	Tube, double-ended

## Approval and Application

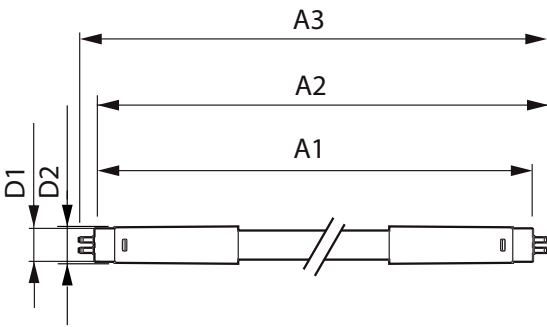
Energy-saving product	Yes
Approval marks	RoHS compliance CE marking KEMA Keur certificate

Energy consumption kWh/1,000 hours	8 kWh
------------------------------------	-------

## Product Data

Full product code	871869978347100
Order product name	MASTER LEDtube 600mm HE 8W 865 T5
EAN/UPC – product	8718699783471
Order code	929002420808
SAP numerator – quantity per pack	1
Numerator – packs per outer box	10
SAP material	929002420808
SAP net weight (piece)	0.250 kg

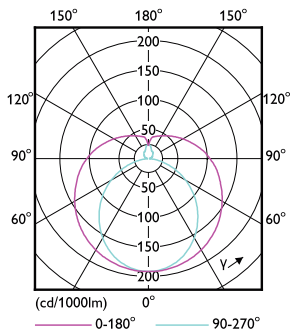
## Dimensional drawing



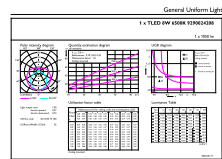
Master LEDtube 600mm 8W865 G5 WV GMGC

Product	D1	D2	A1	A2	A3
MASTER LEDtube 600mm HE 8W 865 T5	15.8 mm	19 mm	549 mm	556.1 mm	563.2 mm

## Photometric data



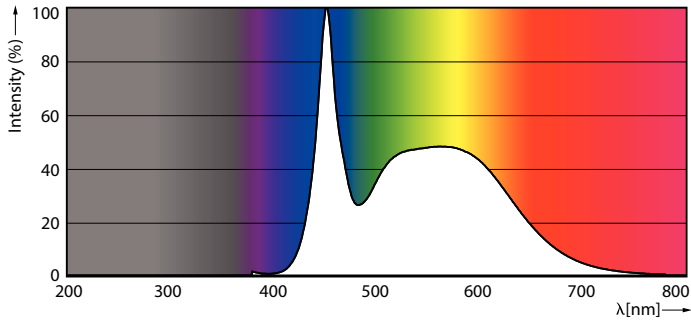
LEDtube MAS 8W G5 1000lm



LEDtube MAS 8W G5 1050lm 865

# MASTER LEDtube Mains T5

## Photometric data

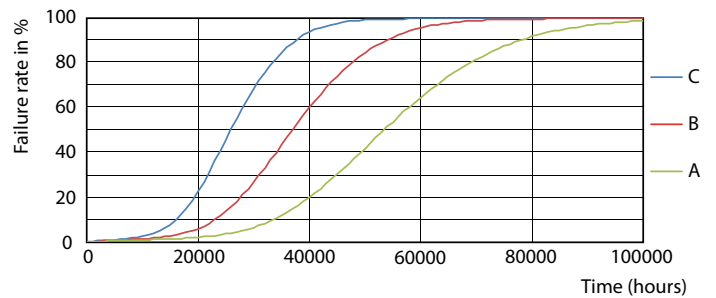


LEDtube MAS 8W G5 1050lm 865

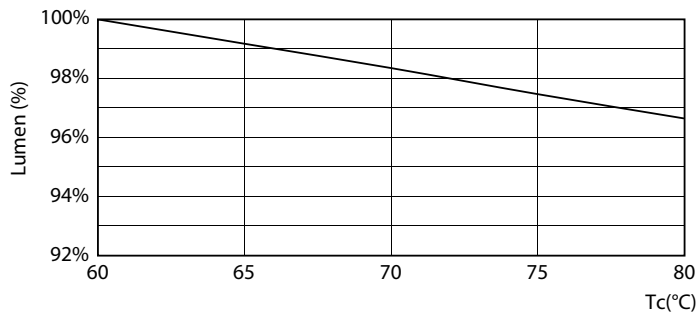
## Lifetime



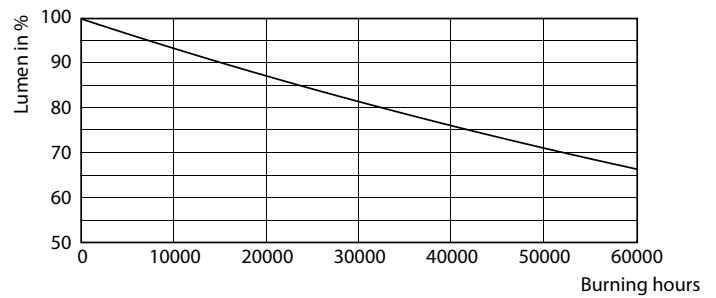
LEDtube 50K-LED



LEDtube 50K FailureRate-LED



LEDtube 8W 50K LumenVsTc



LEDtube 50K-LMP

# MASTER LEDtube Mains T5

## Lifetime



LEDtube 50K LifetimeVsTc-LED

