



MASTER LEDtube Mains T5

MASTER LEDtube 1200mm HE 16.5W 840 T5

The new Philips Master LEDtube Mains T5 brings simplicity to your lighting project. You don't need to pay attention to the driver technology anymore. Thanks to a unique design, Philips MASTER LEDtube Mains T5 installs in luminaires operating on mains power connection. So simple to operate! Perfectly safe, reliable & easy to install, the Philips MASTER LEDtube Mains T5 is the ideal alternative to standard fluorescent tubes to maximise value over lifetime with high energy savings and lower maintenance costs.

Product data

General Information	
Cap base	G5 [G5]
EU RoHS compliant	Yes
Nominal lifetime (nom.)	50000 h
Switching cycle	200,000X
Technical type	16.5-28W

Light Technical	
Colour Code	840 [CCT of 4,000 K]
Technical Beam Angle (Nom)	200 °
Lamp Luminous Flux 25°C EL (Nom)	2500 lm
Colour Designation	Cool White (CW)
Colour Temperature, horizontal (Nom)	4000 K
Lamp Luminous Efficacy EM (Nom)	151.00 lm/W
Colour consistency	<6
Colour Rendering Index,horiz (Nom)	80
LLMF at end of nominal lifetime (nom.)	70 %

Operating and Electrical	
Input frequency	50 to 60 Hz
Power (Rated) (Nom)	16.5 W
Lamp current (max.)	180 mA
Lamp current (min.)	70 mA
Starting time (nom.)	0.5 s
Warm-up time to 60% light (nom.)	0.5 s
Power factor (nom.)	0.9
Voltage (Nom)	100-240 V

Temperature	
T-ambient (max.)	45 °C
T-ambient (min.)	-20 °C
T storage (max.)	65 °C
T storage (min.)	-40 °C
T-Case maximum (nom.)	70 °C

MASTER LEDtube Mains T5

Controls and Dimming

Dimmable	No
----------	----

Mechanical and Housing

Lamp Finish	Frosted
Bulb material	Glass
Product length	1200 mm
Bulb shape	Tube, double-ended

Approval and Application

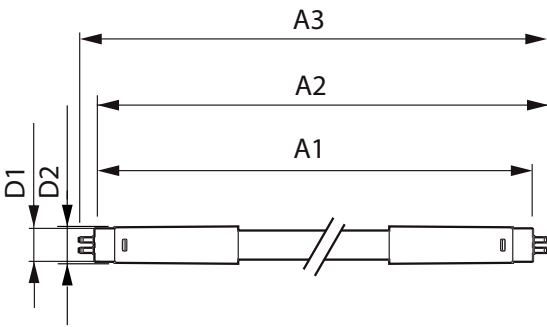
Energy-saving product	Yes
Approval marks	RoHS compliance CE marking KEMA Keur certificate

Energy consumption kWh/1,000 hours	17 kWh
------------------------------------	--------

Product Data

Full product code	871869978351800
Order product name	MASTER LEDtube 1200mm HE 16.5W 840 T5
EAN/UPC – product	8718699783518
Order code	929002421008
SAP numerator – quantity per pack	1
Numerator – packs per outer box	10
SAP material	929002421008
SAP net weight (piece)	0.215 kg

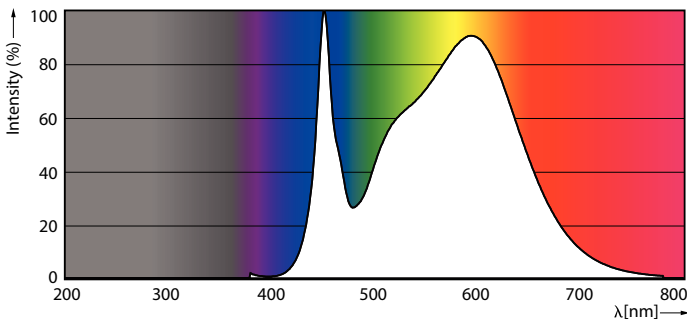
Dimensional drawing



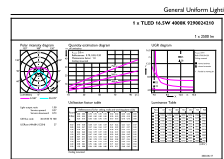
Master LEDtube 1200mm 16.5W840 G5 WV

Product	D1	D2	A1	A2	A3
MASTER LEDtube 1200mm HE 16.5W 840 T5	15.8 mm	19 mm	1149 mm	1156.1 mm	1163.2 mm

Photometric data



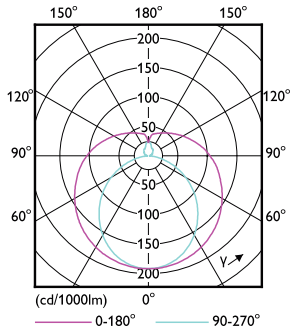
LEDtube MAS 16,5W G5 2500lm 840



LEDtube MAS 16,5W G5 2500lm 840

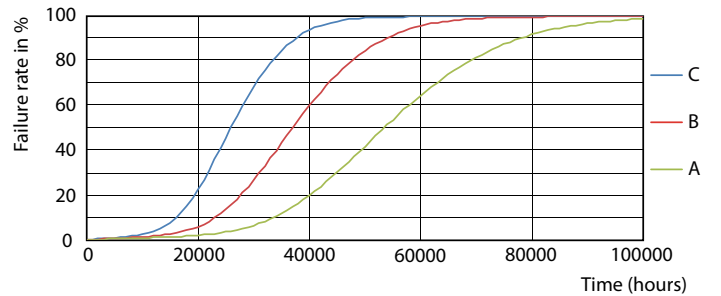
MASTER LEDtube Mains T5

Photometric data



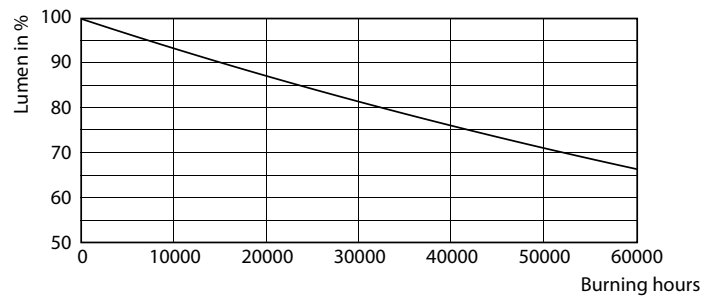
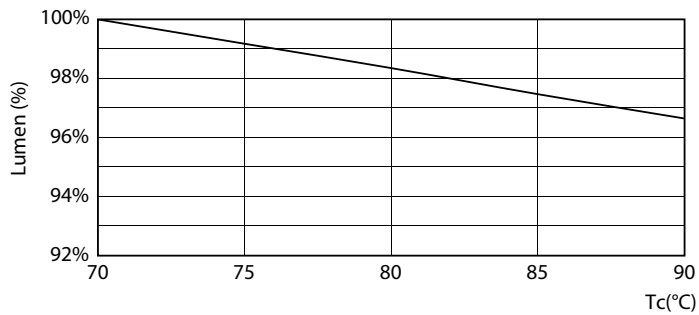
LEDtube MAS 8W G5 1000lm

Lifetime



LEDtube 50K-LED

LEDtube 50K FailureRate-LED

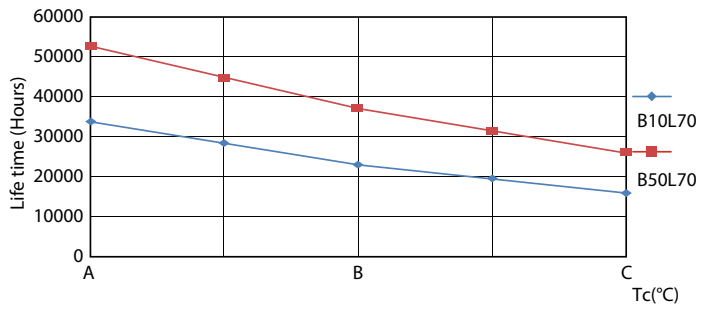


LEDtube 16,5W 50K LumenVsTc

LEDtube 50K-LMP

MASTER LEDtube Mains T5

Lifetime



LEDtube 50K LifetimeVsTc-LED

