



RoadFlair Gen2

BRP491 LED142/NW 100W 220-240V DM GM

RoadFlair Gen2 is brand new design road lighting product family, set to meet customers' all-round requirements, including high lumen efficacy for energy saving and sustainability, aesthetic design for nice shape and appearance, quality material and components for product reliability and long life-time, professional optics for various application fulfilment, dimming and system control interface for improving municipal operations and offering future-proof features. RoadFlair Gen2 competitive price would help on the acceleration of road lighting LED transformation, to more sustainable society and smarter city.

Product data

General Information	
Lamp colour code	740 neutral white
Driver included	Yes
Optical cover/lens type	PC-MLO [Polycarbonate micro lens optic]
Control interface	DALI
Connection	SI [Screw connection block]
Cable	-
Protection class IEC	Safety class I (I)
CE mark	CE mark
Operating and Electrical	
Input Voltage	220 to 240 V
Input frequency	50 or 60 Hz
Power factor (min.)	0.95
Controls and Dimming	
Dimmable	Yes

Mechanical and Housing	
Housing material	Aluminium pressure die cast
Optical cover/lens material	Polycarbonate
Overall length	355 mm
Overall width	230 mm
Overall height	136 mm
Colour	Aluminium and Grey

Approval and Application	
Ingress protection code	IP66 [Dust penetration-protected, jet-proof]
Mech. impact protection code	IK08 [5 J vandal-protected]

Initial Performance (IEC Compliant)	
Initial luminous flux	14200 lm
Luminous flux tolerance	+/-10%
Initial LED luminaire efficacy	140 lm/W
Lamp colour temperature	4000 K
Colour Rendering Index	>70
Initial input power	100 W

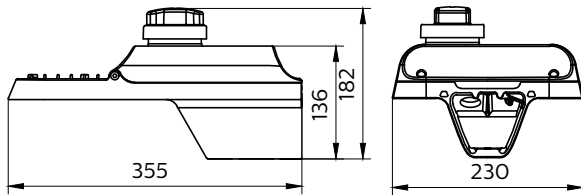
RoadFlair Gen2

Power consumption tolerance	+/-10%
Application Conditions	
Ambient temperature range	-40 to +50 °C
Product Data	
Full product code	911401673306
Order product name	BRP491 LED142/NW 100W 220-240V DM GM

Order code	911401673306
SAP numerator – quantity per pack	1
Numerator – packs per outer box	1
SAP material	911401673306
SAP net weight (piece)	3.600 kg



Dimensional drawing



BRP47x/BRP49x

