



# RoadFlair Gen2

## BRP491 LED107/WW 80W 220-240V DM GM

RoadFlair Gen2 is brand new design road lighting product family, set to meet customers' all-round requirements, including high lumen efficacy for energy saving and sustainability, aesthetic design for nice shape and appearance, quality material and components for product reliability and long life-time, professional optics for various application fulfilment, dimming and system control interface for improving municipal operations and offering future-proof features. RoadFlair Gen2 competitive price would help on the acceleration of road lighting LED transformation, to more sustainable society and smarter city.

### Product data

General Information	
Lamp colour code	730 warm white
Driver included	Yes
Optical cover/lens type	PC-MLO [ Polycarbonate micro lens optic]
Control interface	DALI
Connection	SI [ Screw connection block]
Cable	-
Protection class IEC	Safety class I (I)
CE mark	CE mark

Operating and Electrical	
Input Voltage	220 to 240 V
Input frequency	50 or 60 Hz
Power factor (min.)	0.95

Controls and Dimming	
Dimmable	Yes

Mechanical and Housing	
Housing material	Aluminium pressure die cast
Optical cover/lens material	Polycarbonate
Overall length	355 mm
Overall width	230 mm
Overall height	136 mm
Colour	Aluminium and Grey

Approval and Application	
Ingress protection code	IP66 [ Dust penetration-protected, jet-proof]
Mech. impact protection code	IK08 [ 5 J vandal-protected]

Initial Performance (IEC Compliant)	
Initial luminous flux	10700 lm
Luminous flux tolerance	+/-10%
Initial LED luminaire efficacy	130 lm/W
Lamp colour temperature	3000 K
Colour Rendering Index	>70
Initial input power	80 W

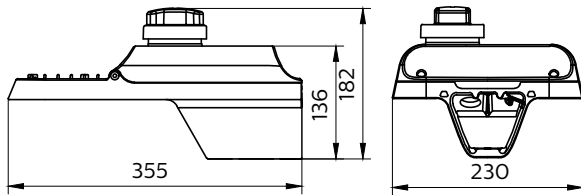
## RoadFlair Gen2

Power consumption tolerance	+/-10%
<b>Application Conditions</b>	
Ambient temperature range	-40 to +50 °C
<b>Product Data</b>	
Full product code	911401674406
Order product name	BRP491 LED107/WW 80W 220-240V DM GM

Order code	911401674406
Numerator – quantity per pack	1
Numerator – packs per outer box	1
SAP material	911401674406
SAP net weight (piece)	3.600 kg



### Dimensional drawing



BRP47x/BRP49x

