



# HID ignitors for series systems

## SND 58 220-240V 50/60Hz

HID ignitors for series systems

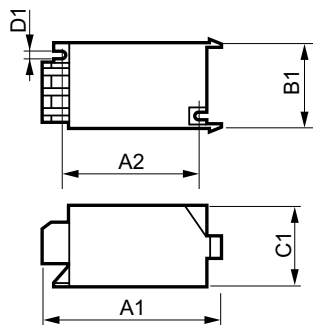
### Product data

General Information	
Application code	58
Lamp type	SON/CDM/MH/HPI/HPA
Number of lamps	1 piece/unit
Operating and Electrical	
Input Voltage	220 to 240 V
Input frequency	50 to 60 Hz
Ignition type	Semi-Parallel
Ignition attempts	3
Ignition time (max.)	1185 s
Ignition voltage (max.)	5.0 kV
Ignition voltage (min.)	2.8 kV
Response voltage	195 V
Mains voltage performance (AC)	-8% - +6%
Mains voltage safety (AC)	-10% - +10%
Power losses (nom.)	1.0 W
Wiring	
Ballast contact wire cross section	0.70-2.50 mm <sup>2</sup>
Connector type	Screw
System characteristics	
Rated ballast-lamp power	35-600 W

Temperature	
T-ambient (max.)	85 °C
T-ambient (min.)	-20 °C
T-Case maximum (max.)	90 °C
Mechanical and Housing	
Housing	SNI-85
Approval and Application	
Approval marks	CE marking ENEC certificate
Product Data	
Full product code	871150093068230
Order product name	SND 58 220-240V 50/60Hz
EAN/UPC – product	8711500930682
Order code	913700185166
Numerator – quantity per pack	1
Numerator – packs per outer box	48
SAP material	913700185166
SAP net weight (piece)	0.050 kg

## HID ignitors for series systems

### Dimensional drawing



Product	D1	C1	A1	A2	B1
SND 58 220-240V 50/60Hz	4.3 mm	38.5 mm	84.5 mm	65.0 mm	41.5 mm

SND 58 220-240V 50/60Hz

