



PrimaVision Mini for CDM

HID-PV m 50 /S CDM HPF 220-240V 50/60Hz

Miniature HID electronic gear for PGJ5 CDM lamps – freeing up the boundaries of creativity and innovation in luminaire design

Product data

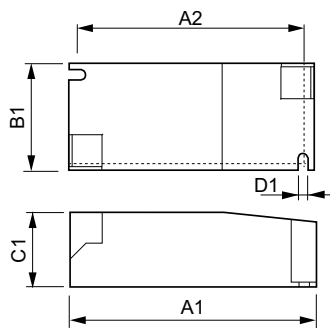
| General Information | | Inrush current peak (max.) | |
|--|--------------|---|---------------------------|
| Application code | HPF | | 25 A |
| Type version | mk2 | Wiring | |
| Lamp type | CDM | Cable capacity output wires mutual (nom.) | 50 pF |
| Number of lamps | 1 piece/unit | Cable length from device to lamp | 0.5 m |
| Suitable for outdoor use | No | Wire strip length | 8.5-9.5 mm |
| Number of products on MCB (16 A type B) (nom.) | 24 | Ballast contact wire cross section | 0.75-1.50 mm ² |
| | | Connector type | Insert |
| Operating and Electrical | | System characteristics | |
| Input Voltage | 220 to 240 V | Rated ballast-lamp power | 50 W |
| Input frequency | 50 to 60 Hz | Temperature | |
| Minimum mains voltage operation (min.) | 198 V | T-ambient (max.) | 50 °C |
| Ignition voltage (max.) | 4.5 kV | T-ambient (min.) | -20 °C |
| Ignition voltage (min.) | 3.0 kV | T storage (max.) | 80 °C |
| Ignition switch-off time (nom.) | 25 min | T storage (min.) | -25 °C |
| Mains voltage performance (AC) | -10% - +6% | T-case lifetime (nom.) | 75 °C |
| Mains voltage safety (AC) | -18% - +10% | T-Case maximum (max.) | 80 °C |
| Earth leakage current (max.) | 0.25 mA | | |
| Inrush current width | 0.40 ms | | |
| Constant wattage deviation | -3% / +3% | | |
| Power losses (nom.) | 6 W | | |

PrimaVision Mini for CDM

| Mechanical and Housing | |
|-------------------------------|--|
| Housing | /S |
| Approval and Application | |
| Active temperature protection | Yes |
| EMI 9 kHz ... 300 MHz | CISPR 15 ed 7.2 |
| Vibration standard | IEC68-2-6 F c |
| Bumps standard | IEC 68-2-29 Eb |
| Approval marks | F-Marking CE marking ENEC certificate VDE certificate |
| Humming and noise level | Inaudible |

| Product Data | |
|-----------------------------------|--|
| Full product code | 871829111573100 |
| Order product name | HID-PV m 50 /S CDM HPF 220-240V 50/60Hz |
| EAN/UPC – product | 8718291115731 |
| Order code | 913700665966 |
| SAP numerator – quantity per pack | 1 |
| Numerator – packs per outer box | 12 |
| SAP material | 913700665966 |
| SAP net weight (piece) | 0.150 kg |

Dimensional drawing



HID-PV m 50 /S CDM HPF 220-240V 50/60Hz

| Product | D1 | C1 | A1 | A2 | B1 |
|--|--------|---------|---------|---------|---------|
| HID-PV m 50 /S CDM HPF 220-240V 50/60Hz | 4.2 mm | 30.2 mm | 97.3 mm | 88.3 mm | 43.3 mm |

