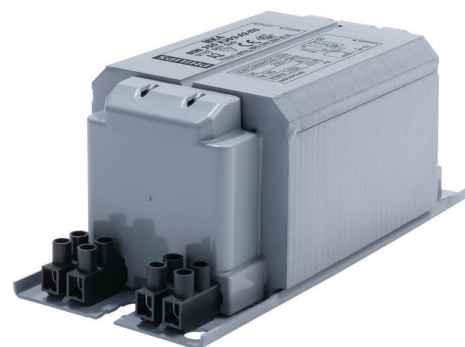


PHILIPS

Lighting



HID-Basic BSN/BMH MK4 semi-parallel for SON/CDO/CDM/MH/ HPI

BSN 250 K302-A2-ITS 230V 50Hz

Impregnated electromagnetic copper ballasts for use with an external semi-parallel ignitor for CDM, CDO, MH, HPI (Plus) and SON lamps

Product data

General Information		Power losses (nom.)	
Application code	K302-A2-ITS		26.1 W
Design	BC2-160	Wiring	
Lamp type	SON/MH/CDM/CDO	Wire strip length	6.0 mm
Number of lamps	1 piece/unit	Ballast contact wire cross section	2.5 mm ²
		Connector type	Screw
Operating and Electrical		System characteristics	
Input Voltage	230 V	Capacitor	32µF/250V
Input frequency	50 Hz	Rated ballast-lamp power	250 W
Power factor 100% load (nom.)	0.85	Recommended ignitor	for SON/CDO/CDM lamps ignitor SKD 578 (913700655366)
Mains voltage performance (AC)	-8%~+6%	Temperature	
Mains voltage safety (AC)	-10%~+10%	T storage (max.)	130 °C
Input current with PF correction	1.4 A	T storage (min.)	-30 °C
Input current without PF Correction	3 A	T-winding (max.)	140 °C
Power factor without PF compensation (nom.)	0.4		

HID-Basic BSN/BMH MK4 semi-parallel for SON/CDO/CDM/MH/HPI

Delta-T normal conditions	70 °C
---------------------------	-------

Approval and Application

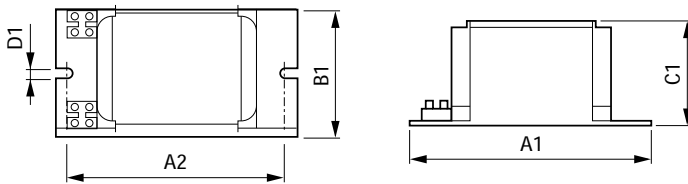
Active temperature protection	Yes
Approval marks	CE marking ENEC certificate

Product Data

Full product code	871869674102300
Order product name	BSN 250 K302-A2-ITS 230V 50Hz

EAN/UPC – product	8718696741023
Order code	913700752926
Numerator – quantity per pack	1
Numerator – packs per outer box	6
SAP material	913700752926
SAP net weight (piece)	3.250 kg

Dimensional drawing



Product	A1	A2	B1	C1	D1
BSN 250 K302-A2-ITS 230V 50Hz	160 mm	139 mm	76 mm	65 mm	6.2 mm

BSN 250 K302-A2-ITS 230V 50Hz

