



MASTER LEDtube EM/ Mains

MASTER LEDtube 1200mm HO 14W830 T8

The Philips MASTER LEDtube integrates a LED light source into a traditional fluorescent form factor. Its unique design creates a perfectly uniform visual appearance which cannot be distinguished from traditional fluorescent. This product is the ideal solution for up lighting in general lighting applications.

Warnings and Safety

• -

Product data

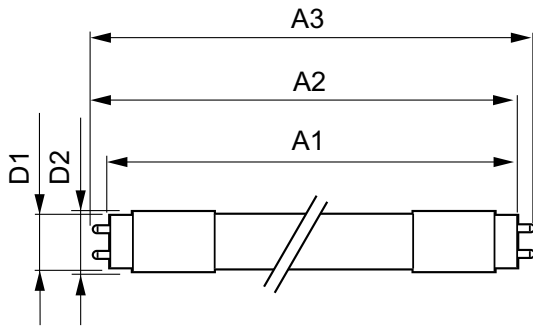
General Information		Operating and Electrical	
Cap base	G13 [Medium Bi-Pin Fluorescent]	Input frequency	50 to 60 Hz
EU RoHS compliant	Yes	Power (Rated) (Nom)	14 W
Nominal lifetime (nom.)	50000 h	Lamp current (max.)	65 mA
Switching cycle	200,000X	Lamp current (min.)	60 mA
Light Technical		Starting time (nom.)	0.5 s
Colour Code	830 [CCT of 3,000 K]	Warm-up time to 60% light (nom.)	0.5 s
Technical Beam Angle (Nom)	160 °	Power factor (nom.)	0.9
Lamp Luminous Flux 25°C EL (Nom)	2000 lm	Voltage (Nom)	220-240 V
Colour Designation	White (WH)	Temperature	
Colour Temperature, horizontal (Nom)	3000 K	T-ambient (max.)	45 °C
Lamp Luminous Efficacy EM (Nom)	142.00 lm/W	T-ambient (min.)	-20 °C
Colour consistency	<6	T storage (max.)	65 °C
Colour Rendering Index,horiz (Nom)	83	T storage (min.)	-40 °C
LLMF at end of nominal lifetime (nom.)	70 %	T-Case maximum (nom.)	55 °C

MASTER LEDtube EM/Mains

Controls and Dimming	
Dimmable	No
Mechanical and Housing	
Product length	1200 mm
Approval and Application	
Energy efficiency label (EEL)	A++
Energy-saving product	Yes
Approval marks	CE marking RoHS compliance KEMA Keur certificate
Energy consumption kWh/1,000 hours	14 kWh

Product Data	
Full product code	871869668724600
Order product name	MASTER LEDtube 1200mm HO 14W830 T8
EAN/UPC – product	8718696687246
Order code	929001299208
SAP numerator – quantity per pack	1
SAP numerator – packs per outer box	10
SAP material	929001299208
Net Weight (Piece)	0.215 kg

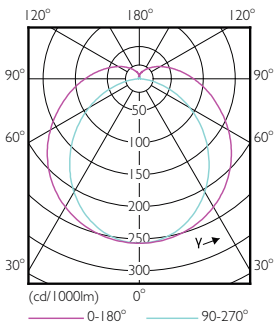
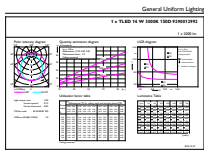
Dimensional drawing



TLED 4ft 14W-36W 2000lm 150D 3000K G13ND

Product	D1	D2	A1	A2	A3
MASTER LEDtube 1200mm HO 14W830 T8	25.8 mm	28 mm	1198.2 mm	1205.3 mm	1212.4 mm

Photometric data

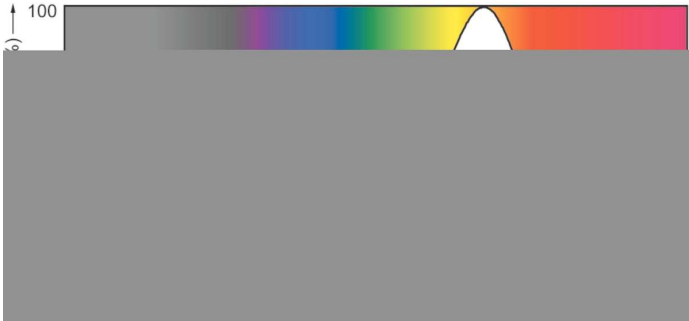


MAS LEDtube HO 14W G13 830 T8

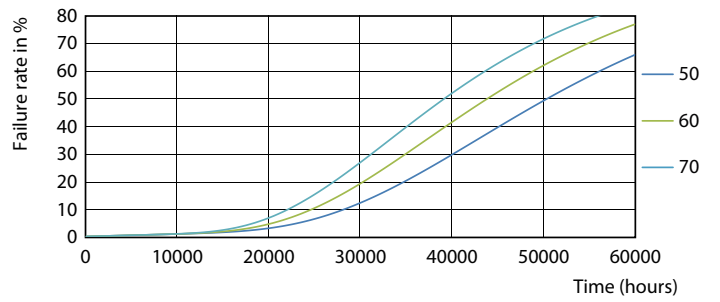
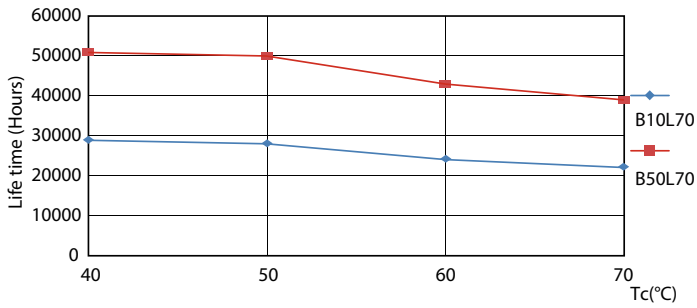
MAS LEDtube HO 14W G13 830-865 T8

MASTER LEDtube EM/Mains

Photometric data

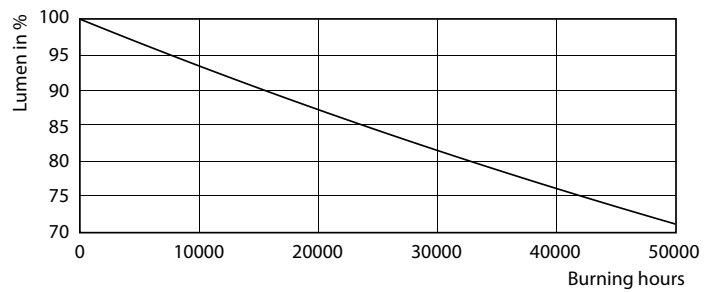
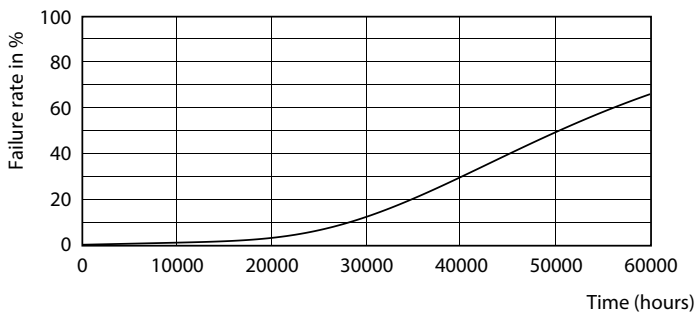


Lifetime



MAS LEDtube HO 14W G13 830-865 T8

MAS LEDtube HO 14W G13 830-865 T8

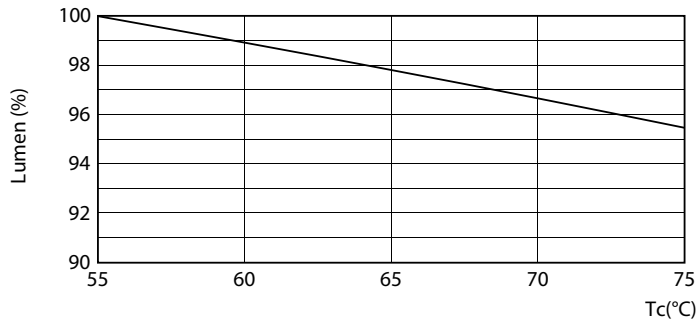


MAS LEDtube HO 14W G13 830-865 T8

MAS LEDtube HO 14W G13 830-865 T8

MASTER LEDtube EM/Mains

Lifetime



MAS LEDtube HO 14W G13 830-865 T8

