



MASTER LEDtube InstantFit HF T5

Master LEDtube HF 600mm HE 8W 840 T5

Philips MASTER LEDtube InstantFit T5 integrates a LED light source into a traditional fluorescent form factor. Its unique design creates a perfectly uniform visual appearance which cannot be distinguished from traditional fluorescents. The Philips MASTER LEDtube InstantFit T5 is the ideal solution for customers who have higher light output requirements and want to maximise value over the lifetime. The full energy savings & longer lifetime result in attractive payback times and TCO benefits.

Product data

General Information	
Cap base	G5 [G5]
EU RoHS compliant	Yes
Nominal lifetime (nom.)	50000 h
Switching cycle	50,000X
Light Technical	
Colour Code	840 [CCT of 4,000 K]
Technical Beam Angle (Nom)	200 °
Lamp Luminous Flux 25°C EL (Nom)	1050 lm
Colour Designation	Cool White (CW)
Colour Temperature, horizontal (Nom)	4000 K
Lamp Luminous Efficacy EM (Nom)	131.00 lm/W
Colour consistency	<6
Colour Rendering Index,horiz (Nom)	83
LLMF at end of nominal lifetime (nom.)	70 %
Operating and Electrical	
Input frequency	35000-70000 Hz

Power (Rated) (Nom)	8 W
Lamp current (max.)	350 mA
Lamp current (min.)	150 mA
Starting time (nom.)	0.5 s
Warm-up time to 60% light (nom.)	0.5 s
Power factor (nom.)	0.9
Voltage (Nom)	40-60 V
Temperature	
T-ambient (max.)	45 °C
T-ambient (min.)	-20 °C
T storage (max.)	65 °C
T storage (min.)	-40 °C
T-Case maximum (nom.)	65 °C
Controls and Dimming	
Dimmable	No

MASTER LEDtube InstantFit HF T5

Mechanical and Housing

Bulb material	Glass
Product length	600 mm

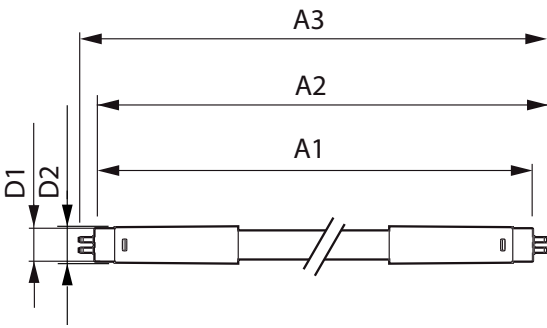
Approval and Application

Energy efficiency label (EEL)	A+
Energy-saving product	Yes
Approval marks	CE marking RoHS compliance KEMA Keur certificate
Energy consumption kWh/1,000 hours	10 kWh

Product Data

Full product code	871869674325600
Order product name	Master LEDtube HF 600mm HE 8W 840 T5
EAN/UPC – product	8718696743256
Order code	929001390802
SAP numerator – quantity per pack	1
Numerator – packs per outer box	10
SAP material	929001390802
SAP net weight (piece)	0.080 kg

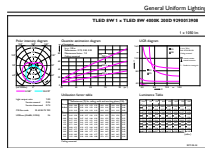
Dimensional drawing



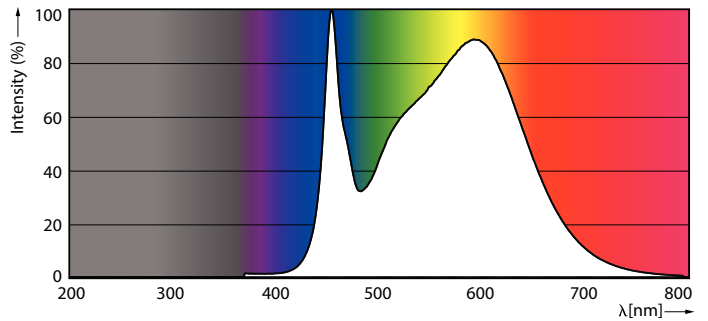
TLED 600mm 230V8W-14W 1050lm 160D 4000K

Product	D1	D2	A1	A2	A3
Master LEDtube HF 600mm HE 8W 840 T5	15.5 mm	18.8 mm	549 mm	556.1 mm	563.2 mm

Photometric data



LEDtube 600mm 8W G5 840 1050lm



LEDtube 600mm 8W G5 840 1050lm

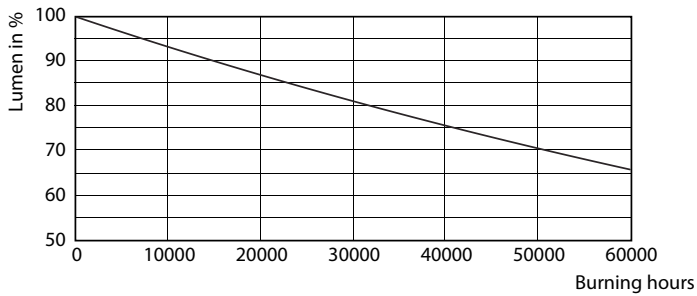
MASTER LEDtube InstantFit HF T5

Photometric data

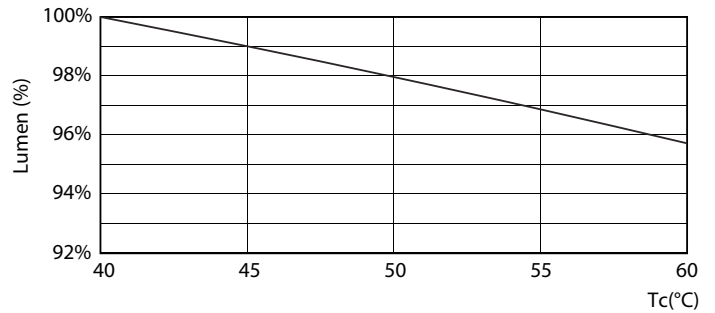


LEDtube 600mm 8W G5 830 1000lm

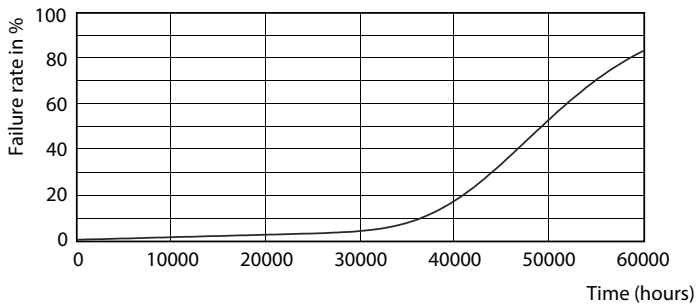
Lifetime



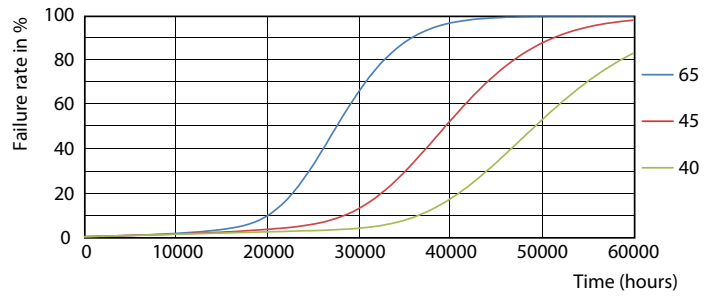
LEDtube 600mm 8W G5 830 1000lm



LEDtube 600mm 8W G5 830 1000lm



LEDtube 600mm 8W G5 830 1000lm



LEDtube 600mm 8W G5 830 1000lm

MASTER LEDtube InstantFit HF T5

Lifetime



LEDtube 600mm 8W G5 830 1000lm

