



MASTER LEDtube EM/ Mains

MASTER LEDtube 1500mm HO 18.2W 865 T8

The Philips MASTER LEDtube integrates a LED light source into a traditional fluorescent form factor. Its unique design creates a perfectly uniform visual appearance which cannot be distinguished from traditional fluorescent. This product is the ideal solution for up lighting in general lighting applications.

Warnings and Safety

• -

Product data

General Information	
Cap base	G13 ROT (Rotating) [Medium Bi-Pin Fluorescent]
EU RoHS compliant	Yes
Nominal lifetime (nom.)	60000 h
Switching cycle	200,000X
Light Technical	
Colour Code	865 [CCT of 6,500 K]
Technical Beam Angle (Nom)	160 °
Lamp Luminous Flux 25°C EL (Nom)	3100 lm
Colour Designation	Cool Daylight
Colour Temperature, horizontal (Nom)	6500 K
Lamp Luminous Efficacy EM (Nom)	170.00 lm/W
Colour consistency	<6
Colour Rendering Index,horiz (Nom)	83
LLMF at end of nominal lifetime (nom.)	70 %

Operating and Electrical	
Input frequency	50 to 60 Hz
Power (Rated) (Nom)	18.2 W
Lamp current (max.)	87 mA
Lamp current (min.)	79 mA
Starting time (nom.)	0.5 s
Warm-up time to 60% light (nom.)	0.5 s
Power factor (nom.)	0.9
Voltage (Nom)	220-240 V
Temperature	
T-ambient (max.)	45 °C
T-ambient (min.)	-20 °C
T storage (max.)	65 °C
T storage (min.)	-40 °C
T-Case maximum (nom.)	55 °C

MASTER LEDtube EM/Mains

Controls and Dimming

Dimmable No

Mechanical and Housing

Bulb material Plastic
Product length 1500 mm

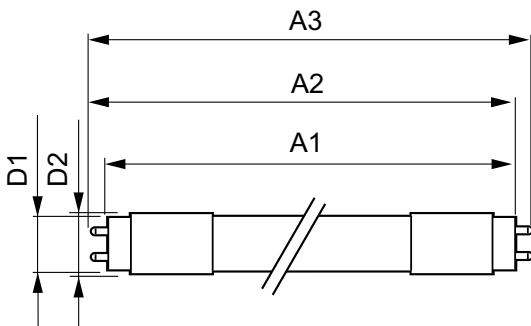
Approval and Application

Energy efficiency label (EEL) A++
Energy-saving product Yes
Approval marks RoHS compliance CE marking KEMA Keur certificate
Energy consumption kWh/1,000 hours 19 kWh

Product Data

Full product code 871869959245500
Order product name MASTER LEDtube 1500mm HO 18.2W 865 T8
EAN/UPC – product 8718699592455
Order code 59245500
SAP numerator – quantity per pack 1
Numerator – packs per outer box 10
SAP material 929001923102
SAP net weight (piece) 0.310 kg

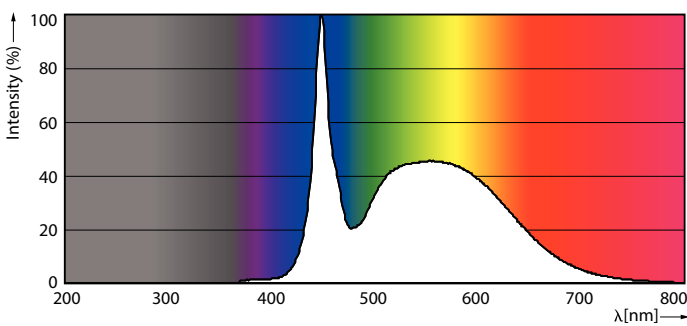
Dimensional drawing



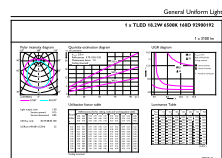
TLED master HE 3100lm 18.2w 5ft 6500k

Product	D1	D2	A1	A2	A3
MASTER LEDtube 1500mm HO 18.2W 865 T8	25.8 mm	28 mm	1498.8 mm	1505.9 mm	1513 mm

Photometric data



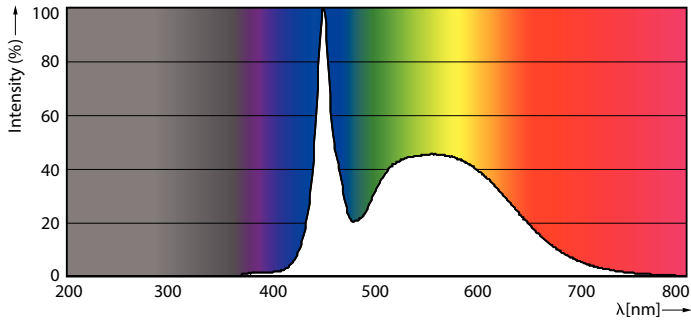
LEDtube T8 MAS HO G13 865



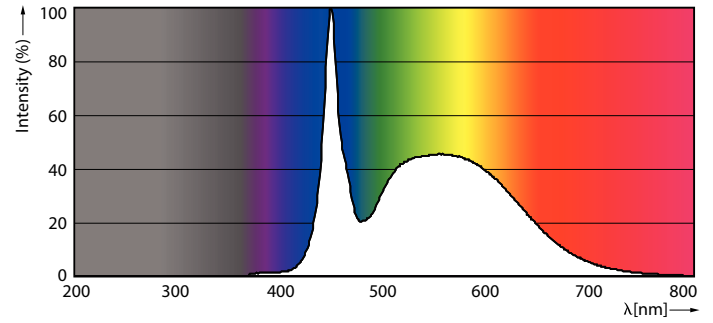
LEDtube MAS HO 18.2W G13 865 16D ND

MASTER LEDtube EM/Mains

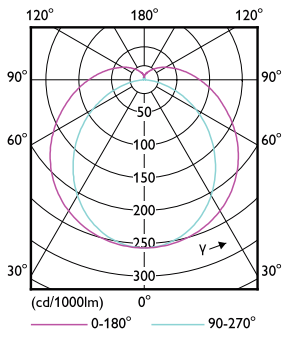
Photometric data



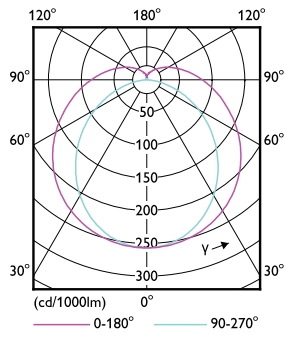
LEDtube MAS HO G13 865



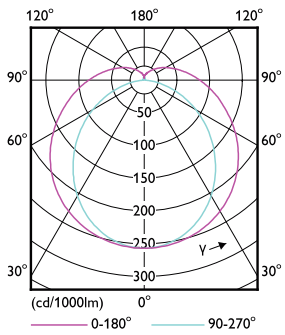
LEDtube MAS HO 12.5W G13 865 16D ND



LEDtube MAS HO G13



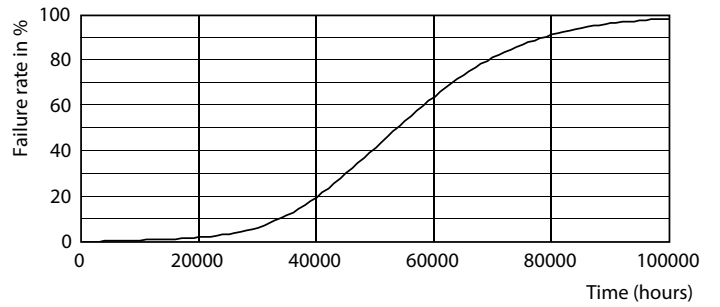
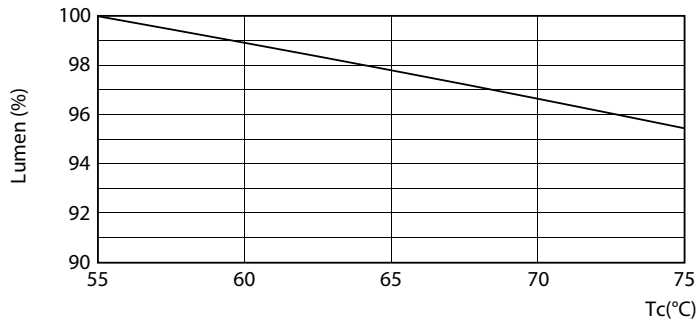
LEDtube T8 MAS HO G13



LEDtube MAS HO 12.5W G13 830 16D ND

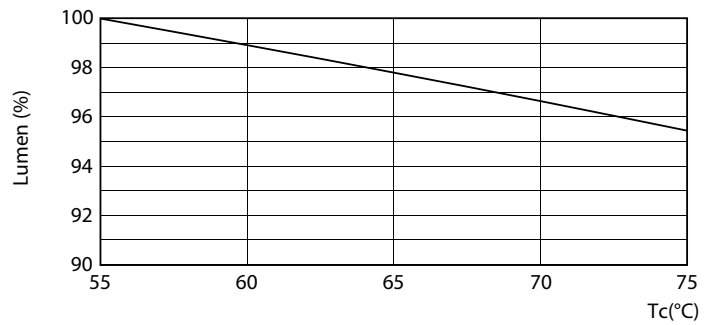
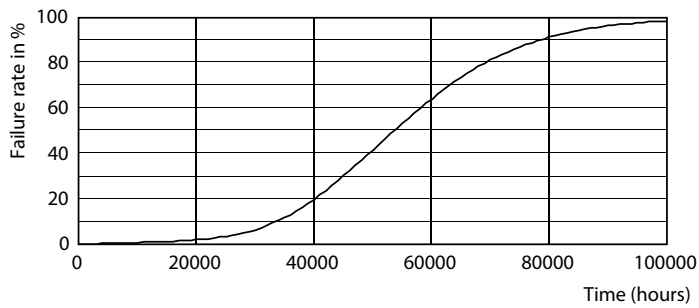
MASTER LEDtube EM/Mains

Lifetime



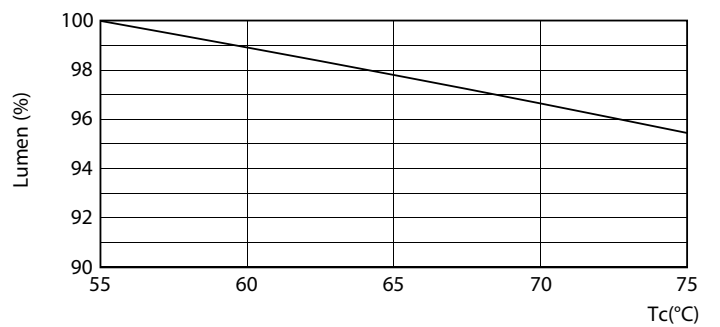
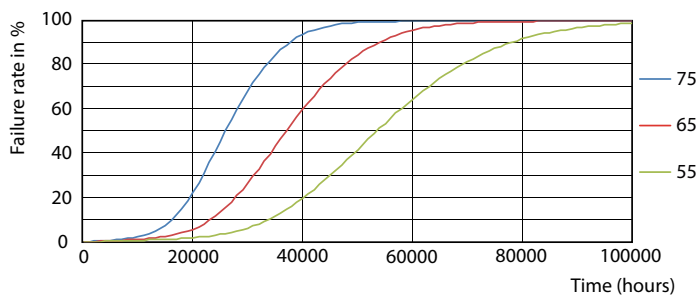
LEDtube T8 MAS HO 18.2W G13

LEDtube MAS HO G13



LEDtube T8 MAS HO G13

LEDtube MAS HO 18.2W G13 830 16D ND

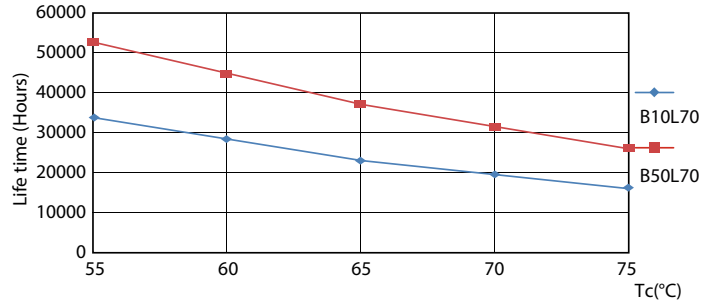
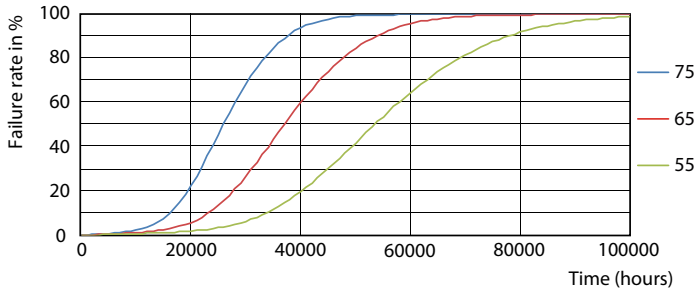


LEDtube MAS HO G13

LEDtube MAS HO 18.2W G13

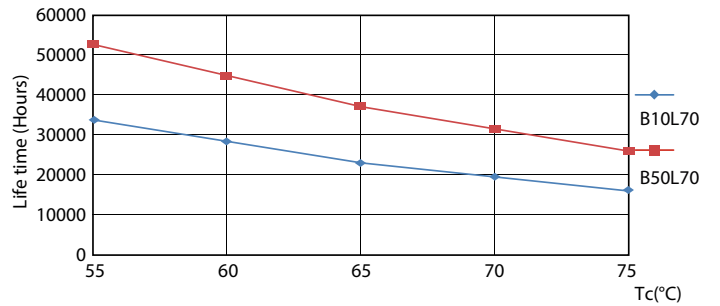
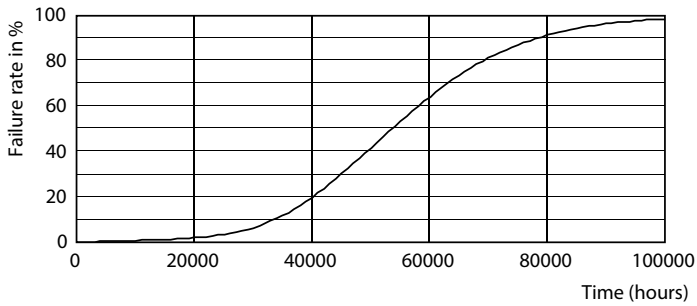
MASTER LEDtube EM/Mains

Lifetime



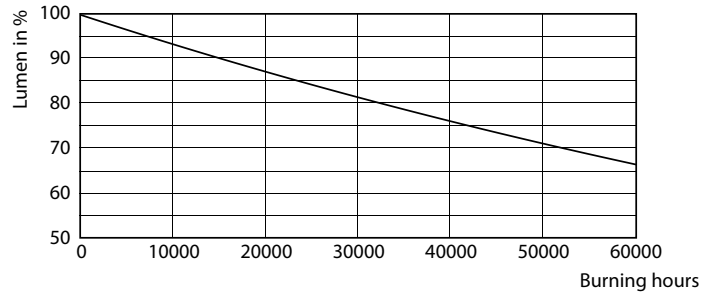
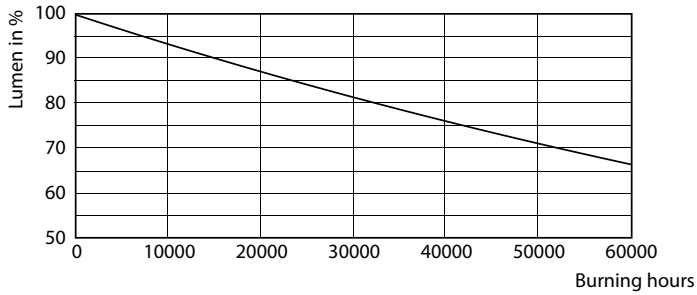
LEDtube MAS HO 12.5W G13 830 16D ND

LEDtube T8 MAS HO G13



LEDtube MAS HO 12.5W G13 830 16D ND

LEDtube MAS HO 12.5W G13 830 16D ND

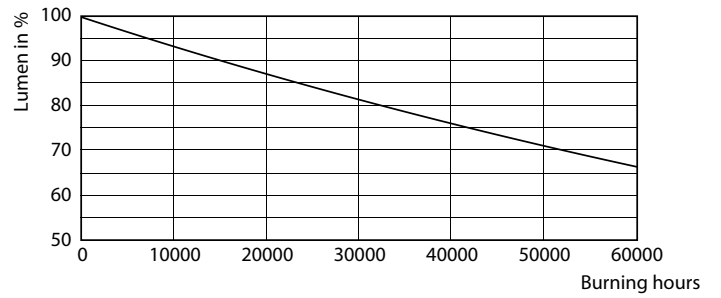
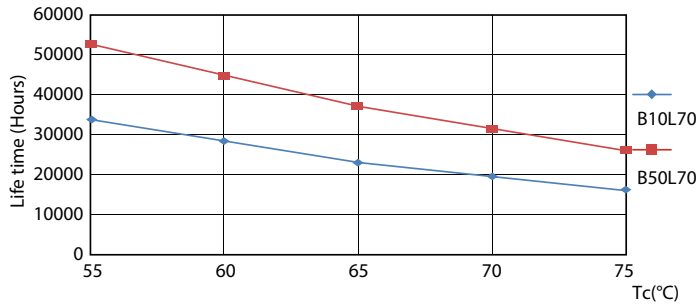


LEDtube MAS HO G13

LEDtube T8 MAS HO G13

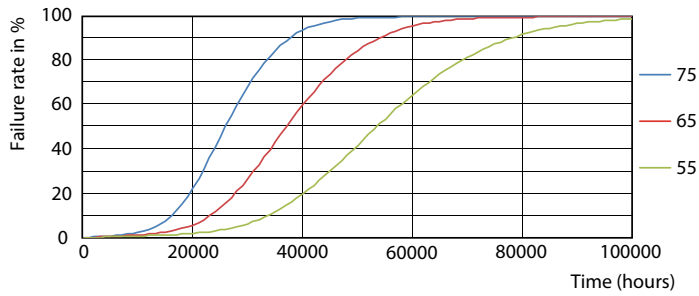
MASTER LEDtube EM/Mains

Lifetime



LEDtube MAS HO G13

LEDtube MAS HO G13



LEDtube T8 MAS HO G13

