

Master Value LEDtube T8

MASTER LEDtube VLE 600mm HO 8W 865 T8

A high-performance LED solution, the professional Master Value LED tube is ideal for replacing T8 fluorescent lamps using EM ballast or installing directly on the mains. This product provides a uniform lighting effect for use in all general lighting, as well as instant energy-efficiency, making for an environmentally friendly solution.

Product data

General Information	
Cap base	G13 [Medium Bi-Pin Fluorescent]
EU RoHS compliant	Yes
Nominal lifetime (nom.)	50000 h
Switching cycle	200,000X

Light Technical	
Colour Code	865 [CCT of 6,500 K]
Technical Beam Angle (Nom)	240 °
Lamp Luminous Flux 25°C EL (Nom)	1050 lm
Colour Designation	Cool Daylight
Colour Temperature, horizontal (Nom)	6500 K
Lamp Luminous Efficacy EM (Nom)	131.00 lm/W
Colour consistency	<6
Colour Rendering Index,horiz (Nom)	83
LLMF at end of nominal lifetime (nom.)	70 %

Operating and Electrical	
Input frequency	50 to 60 Hz
Power (Rated) (Nom)	8 W

Lamp current (max.)	38 mA
Lamp current (min.)	34 mA
Starting time (nom.)	0.5 s
Warm-up time to 60% light (nom.)	0.5 s
Power factor (nom.)	0.9
Voltage (Nom)	220-240 V

Temperature	
T-ambient (max.)	45 °C
T-ambient (min.)	-20 °C
T storage (max.)	65 °C
T storage (min.)	-40 °C
T-Case maximum (nom.)	50 °C

Controls and Dimming	
Dimmable	No

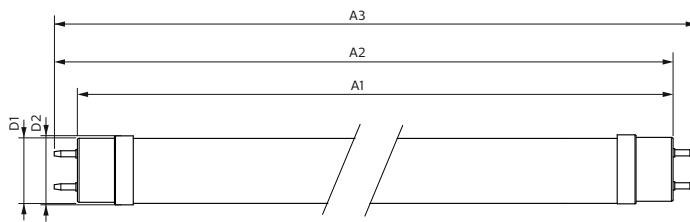
Mechanical and Housing	
Bulb material	Glass

Master Value LEDtube T8

Product length	600 mm
Approval and Application	
Energy efficiency label (EEL)	A++
Energy-saving product	Yes
Approval marks	RoHS compliance CE marking KEMA Keur certificate
Energy consumption kWh/1,000 hours	8 kWh
Product Data	
Full product code	871869964683700

Order product name	MASTER LEDtube VLE 600mm HO 8W 865 T8
EAN/UPC – product	8718699646837
Order code	929002021302
Numerator – quantity per pack	1
SAP numerator – packs per outer box	10
Material no. (12 NC)	929002021302
Net Weight (Piece)	0.120 kg

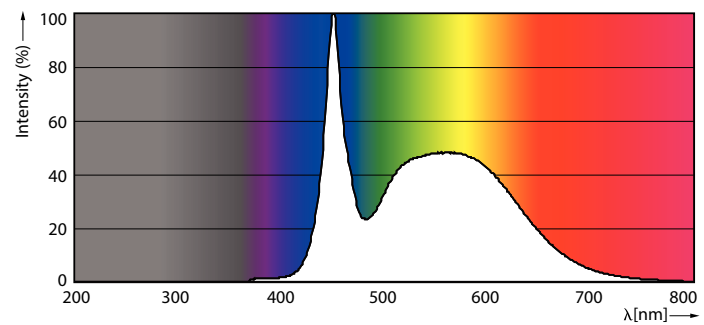
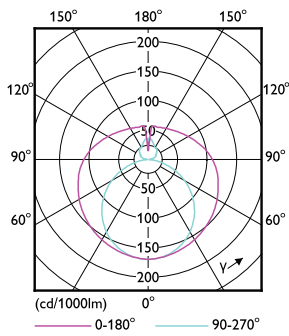
Dimensional drawing



Product	D1	D2	A1	A2	A3
MASTER LEDtube VLE 600mm HO 8W 865 T8	25.8 mm	28 mm	588.5 mm	595.5 mm	602.5 mm

TLED 2ft 220-240V 8-18W 1050lm 6500K G13

Photometric data

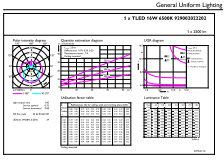


LEDtube 220-240V G13

LEDtube 220-240V G13 6500k

Master Value LEDtube T8

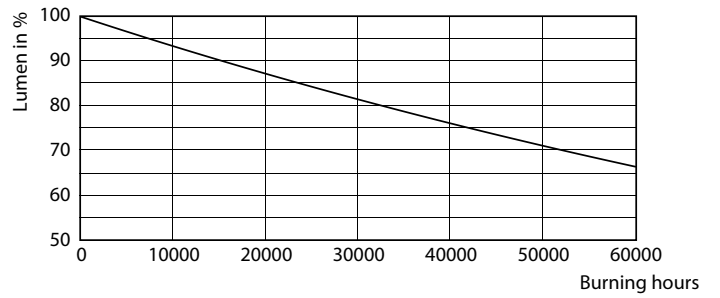
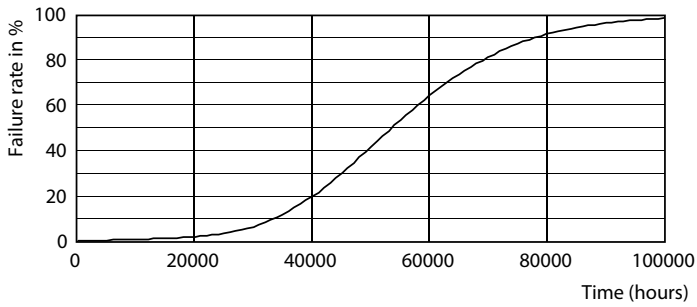
Photometric data



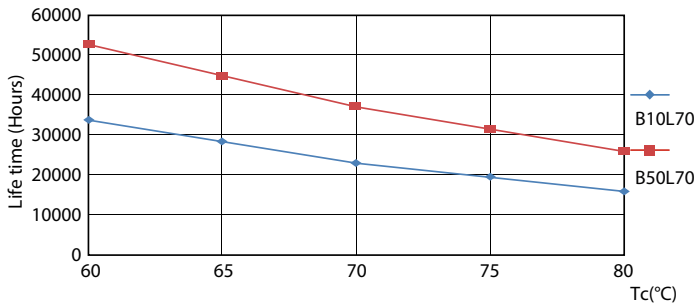
© 2021 Philips Lighting B.V. Page 11

LEDtube 220-240V G13 2ft 1050lm 6500k

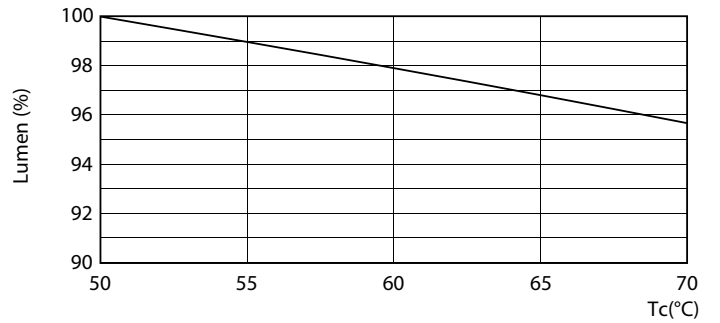
Lifetime



LEDtube 220-240V G13



LEDtube 220-240V G13

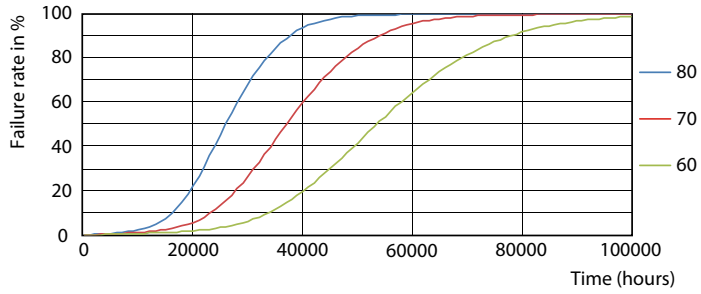


LEDtube 220-240V G13 LifetimeVsTc

LEDtube 220-240V G13 2ft LumenVsTc

Master Value LEDtube T8

Lifetime



LEDtube 220-240V G13 FailureRate

